



SHIIR

CARIFF

Woven centuries ago by tribal Kurds who revered living forms yet dared not presume to replicate their perfection, Cariff's forbearers were at once stylized and abstract - like the exotic animals depicted in Cariff itself. Likely originally commissioned for the most royal of residences, Cariff today is at home in almost any design scheme imaginable.

CARIFF



Origin

Made in India

Material

Wool

Size

Shown as sample size rug

Bonsai



Light Ash



Allure



CARIFF



Origin

Made in India

Material

Wool

Size

Shown as sample size rug

Allure



Light Ash



Bonsai



CARIFF



Origin

Made in India

Material

Wool

Size

Shown as sample size rug

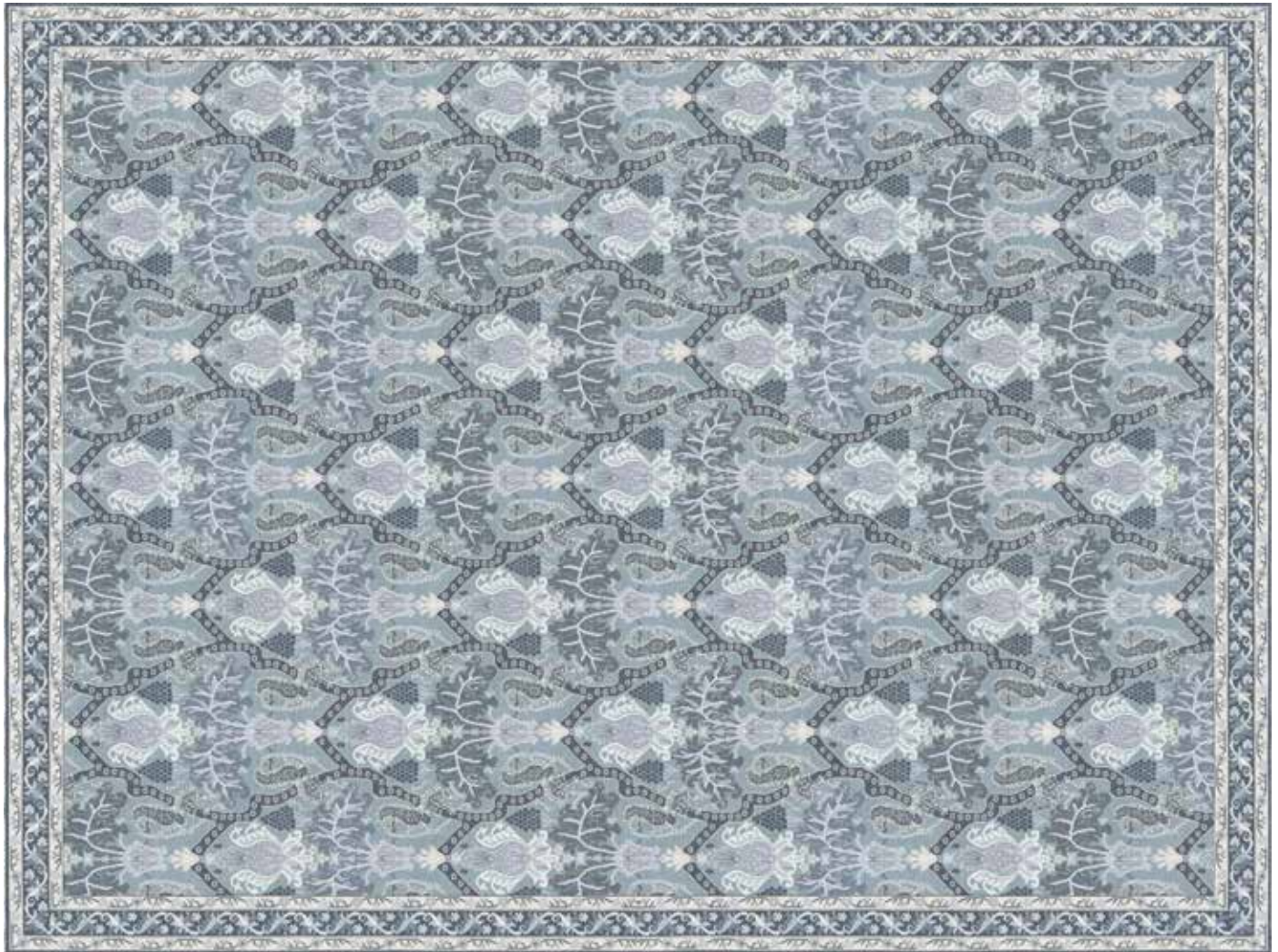
Allure

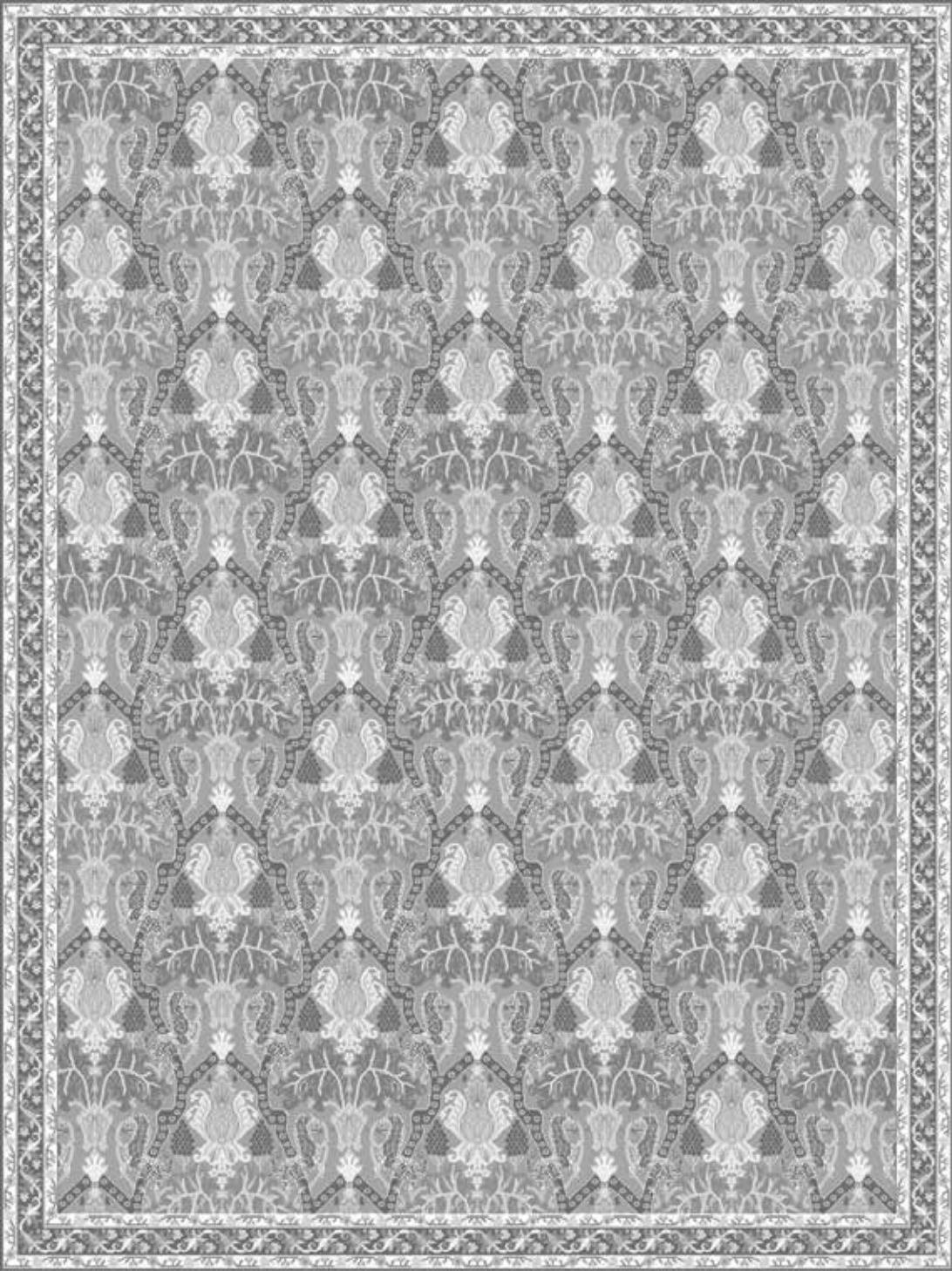


Bonsai



Light Ash





Full pattern rendering shown as 9x12' rug