



SHIIR

## EMPIRE

A decorative interpretation of the quintessential landmark, Empire towers - like its skyline namesake - above a blossoming geometric field. Sequenced and sophisticated, it is also temptingly curvaceous. A dichotomy of design, finely hand-knotted, rendered in wool and shimmering silk - upon which the possibilities are endless, as in the Empire State itself.

# EMPIRE



*Origin*

*Made in India*

*Material*

*Wool & Silk*

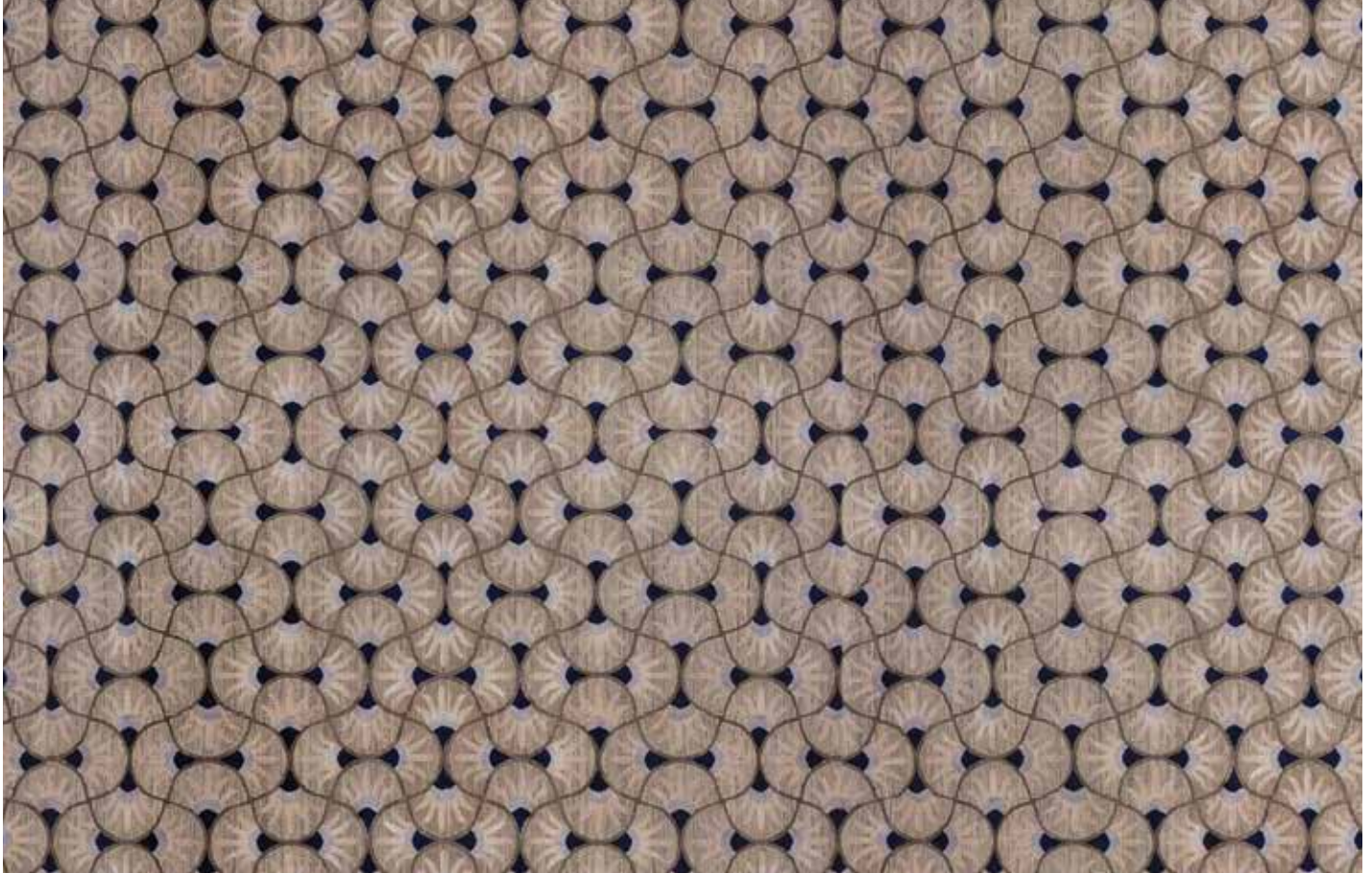
*Size*

*Shown as 9x12' rug*

*Moonstone*



*Havana*



# EMPIRE



*Origin*

*Made in India*

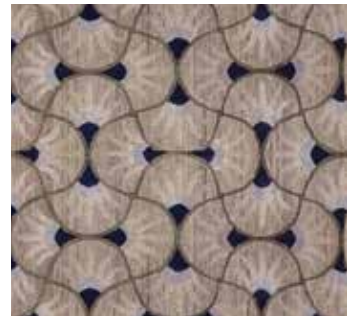
*Material*

*Wool & Silk*

*Size*

*Shown as 9x12' rug*

*Havana*



*Moonstone*

