



# KYOTO

*Origin*

*Made in India*

*Materials*

*Cashmere and Wool*

*Colors*

*Shown in Celedon*

*Also available in Maiko, Rice Wine and Tea Ash*

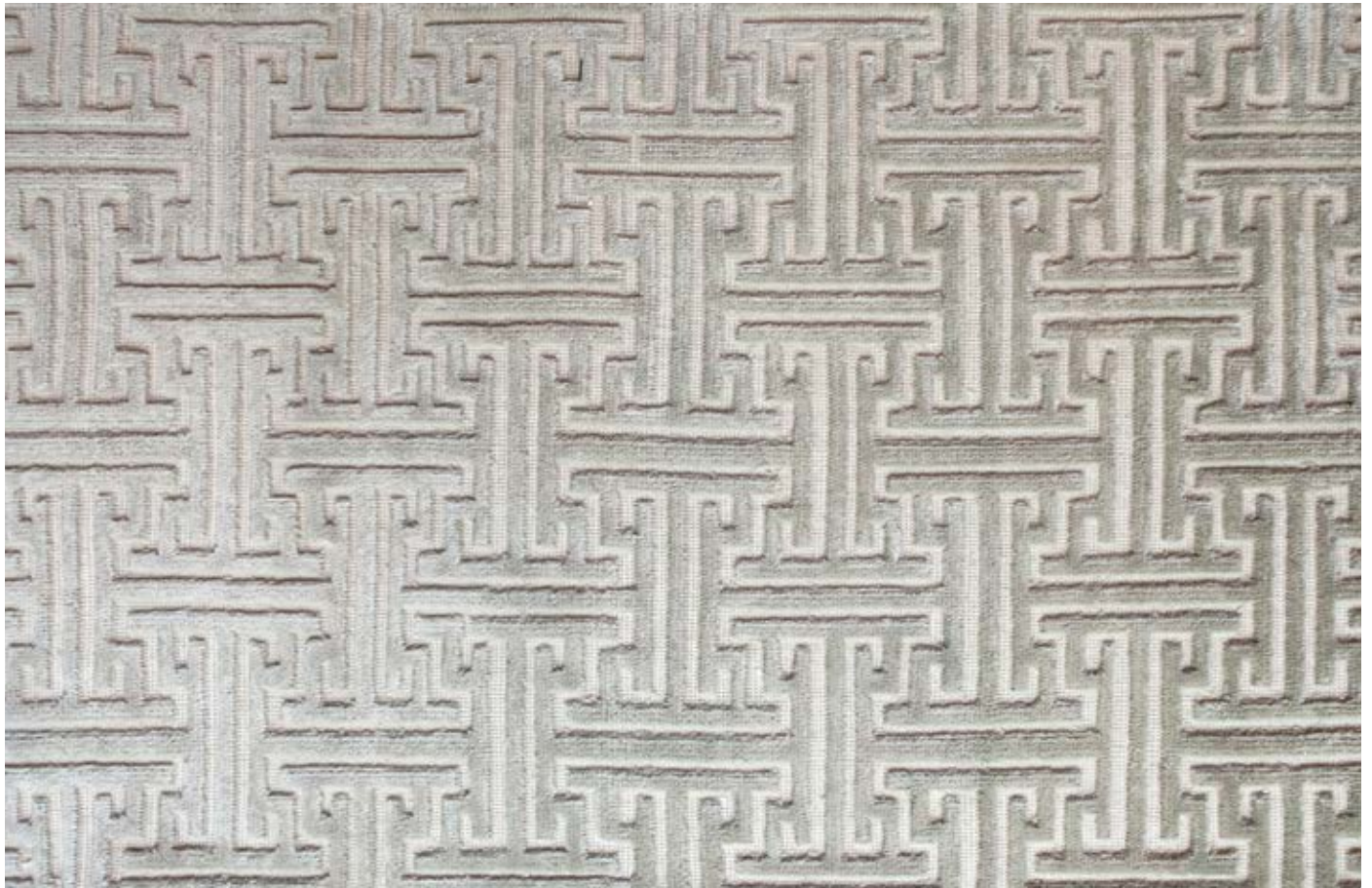
*Sizes*

*3 × 5' 4 × 6' 5 × 7' 6 × 9'*

*8 × 10' 9 × 12' 10 × 14' 12 × 16'*

*Note*

*View of the full pattern is available  
in the back of this book.*







# KYOTO

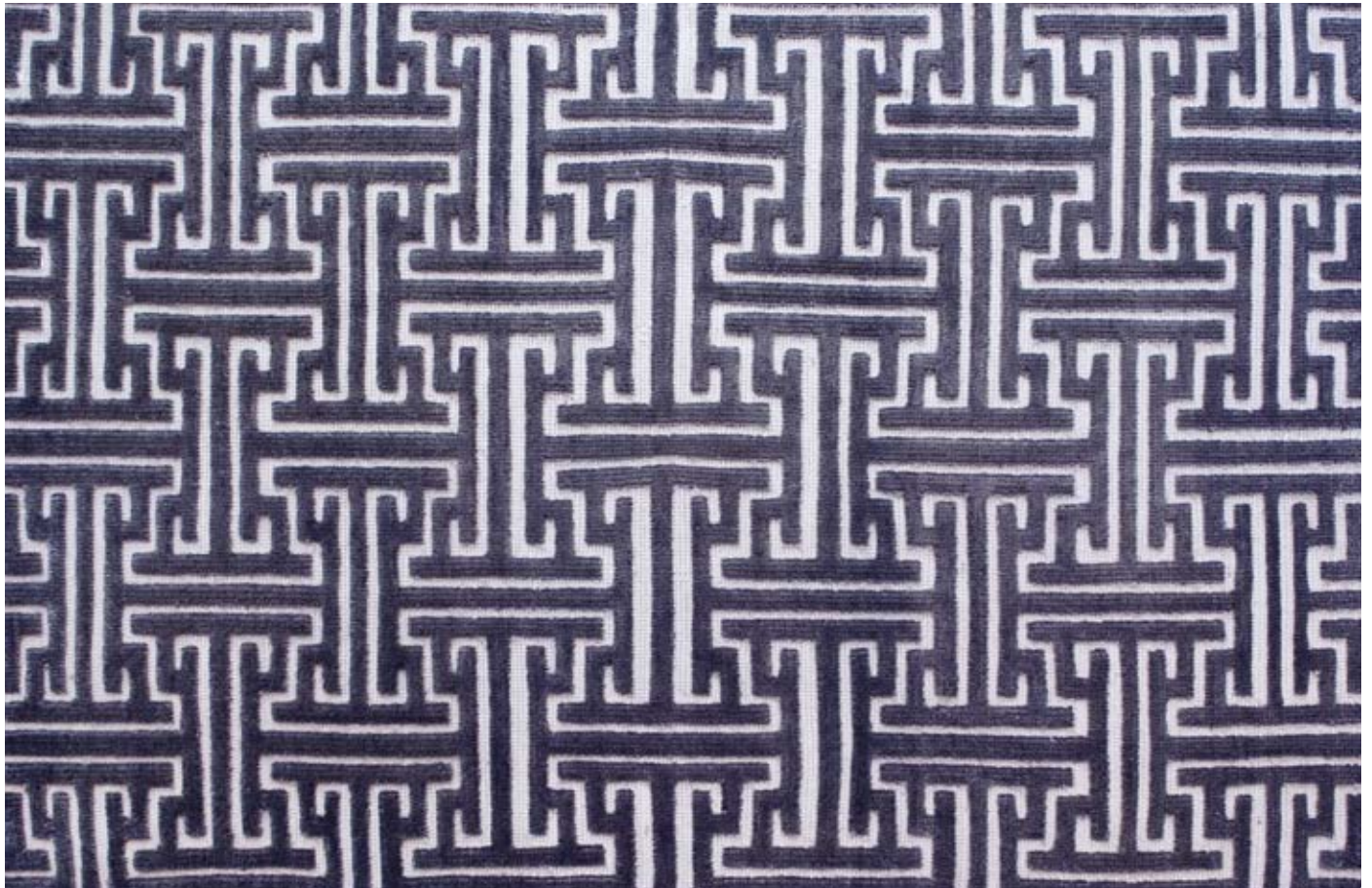
*Origin*  
Made in India

*Materials*  
Cashmere and Wool

*Colors*  
Shown in Maiko  
Also available in Celedon, Rice Wine and Tea Ash

*Sizes*  
3 × 5' 4 × 6' 5 × 7' 6 × 9'  
8 × 10' 9 × 12' 10 × 14' 12 × 16'

*Note*  
View of the full pattern is available  
in the back of this book.





# KYOTO

*Origin*  
Made in India

*Materials*  
Cashmere and Wool

*Colors*  
Shown in Rice Wine  
Also available in Celedon, Maiko and Tea Ash

*Sizes*  
3 × 5' 4 × 6' 5 × 7' 6 × 9'  
8 × 10' 9 × 12' 10 × 14' 12 × 16'

*Note*  
View of the full pattern is available  
in the back of this book.







# KYOTO

*Origin*  
Made in India

*Materials*  
Cashmere and Wool

*Colors*  
Shown in Tea Ash  
Also available in Celadon, Maiko and Rice Wine

*Sizes*  
3 × 5' 4 × 6' 5 × 7' 6 × 9'  
8 × 10' 9 × 12' 10 × 14' 12 × 16'

*Note*  
View of the full pattern is available  
in the back of this book.

