



SHIIR

## LYRA

Perhaps the most influential muse of all time, Mother Nature's floral wonders are represented here, like so many art forms, in uniquely European fashion: overall in design, stylized and angular in interpretation, and becoming of castle, palace, folly - or their edgier, modern-day equivalents.

# LYRA



*Origin*  
Made in India

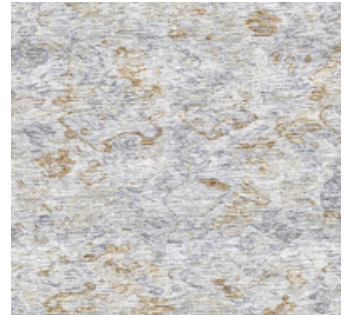
*Material*  
Silk

*Size*  
Shown as sample size rug

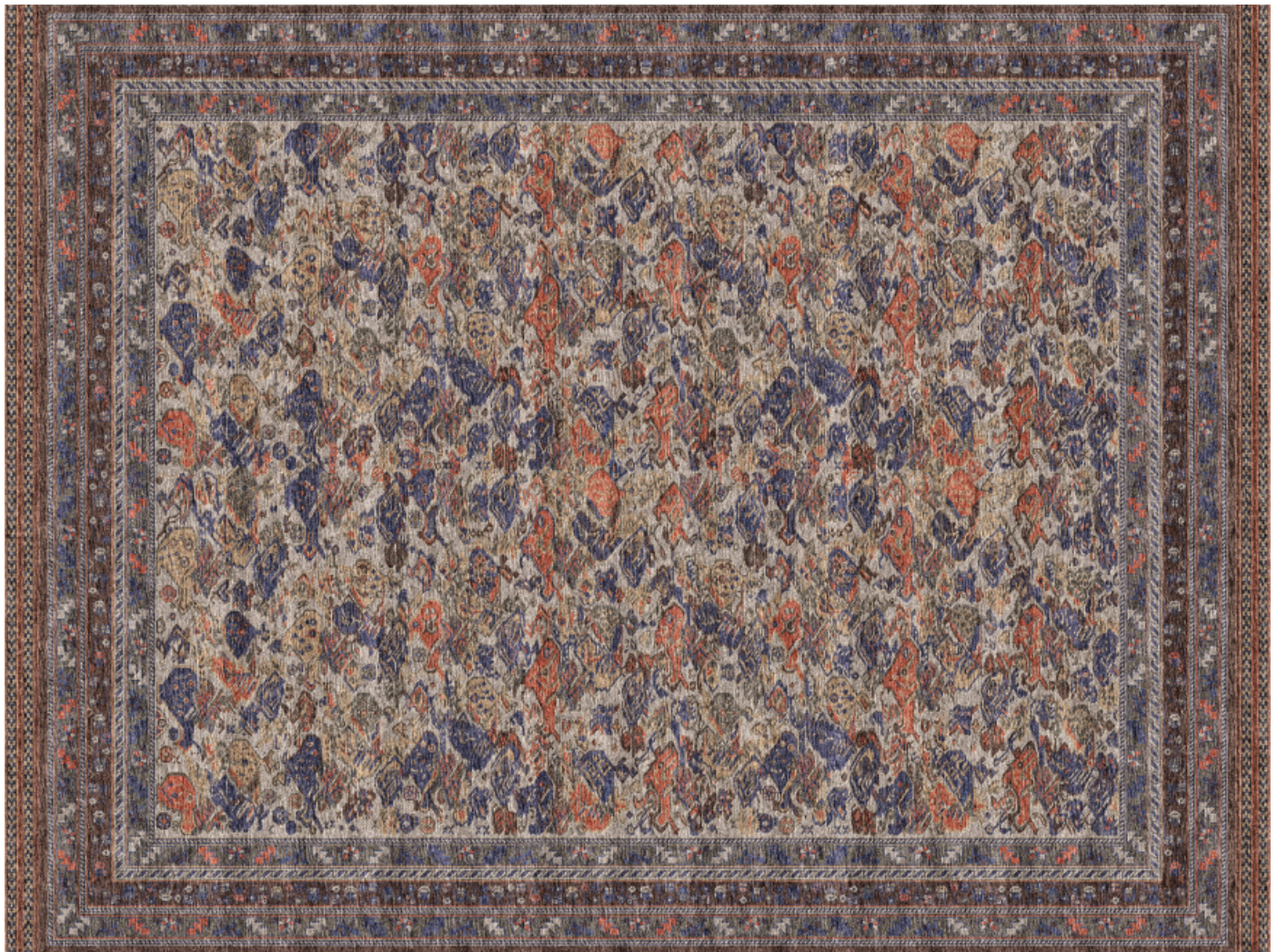
*Emblic*



*Persian Dawn*



*Caspian*



# LYRA



*Origin*  
Made in India

*Material*  
Silk

*Size*  
Shown as sample size rug

*Caspian*



*Persian Dawn*



*Emblc*



# LYRA



*Origin*

*Made in India*

*Material*

*Silk*

*Size*

*Shown as sample size rug*

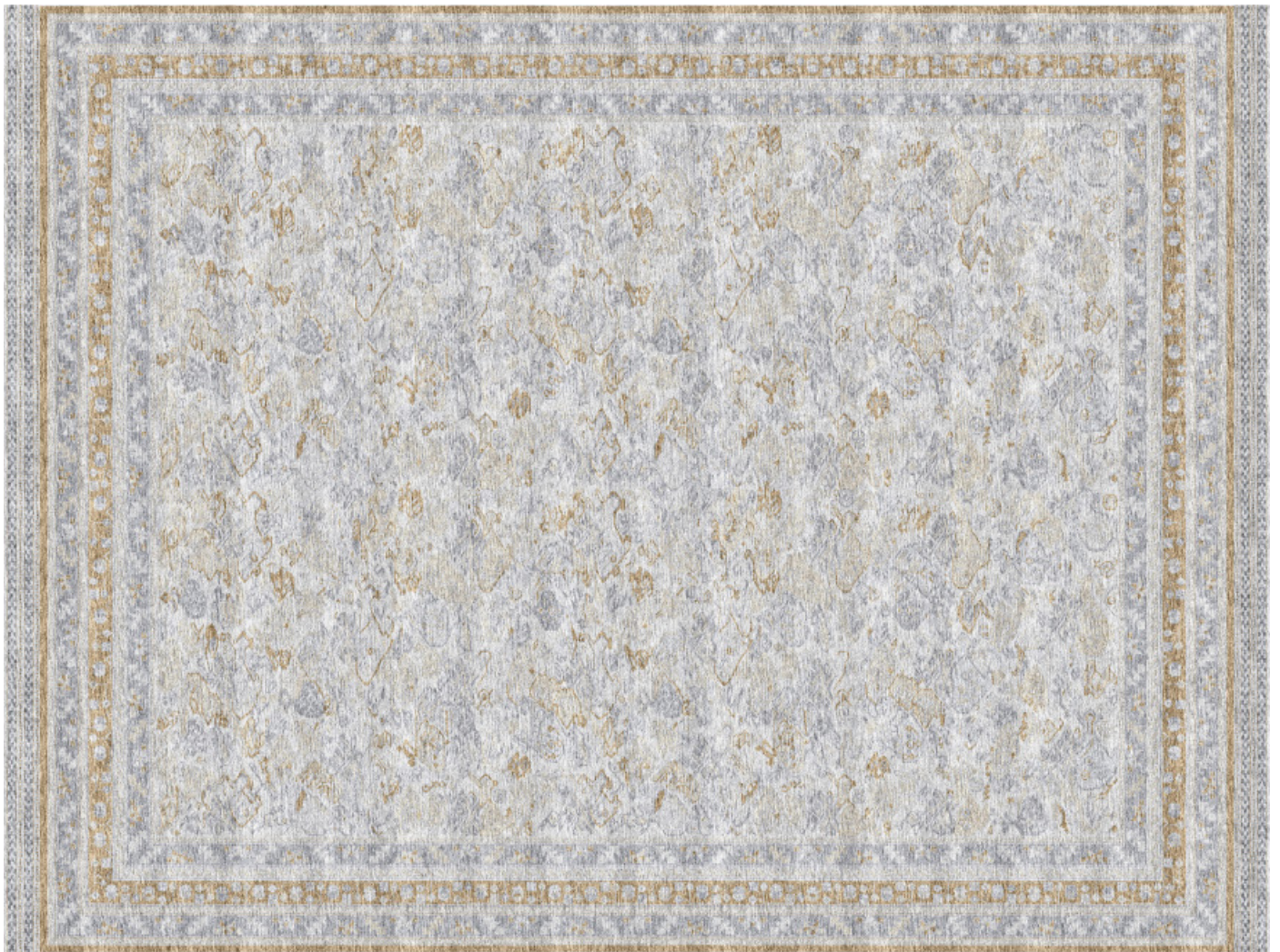
*Caspian*

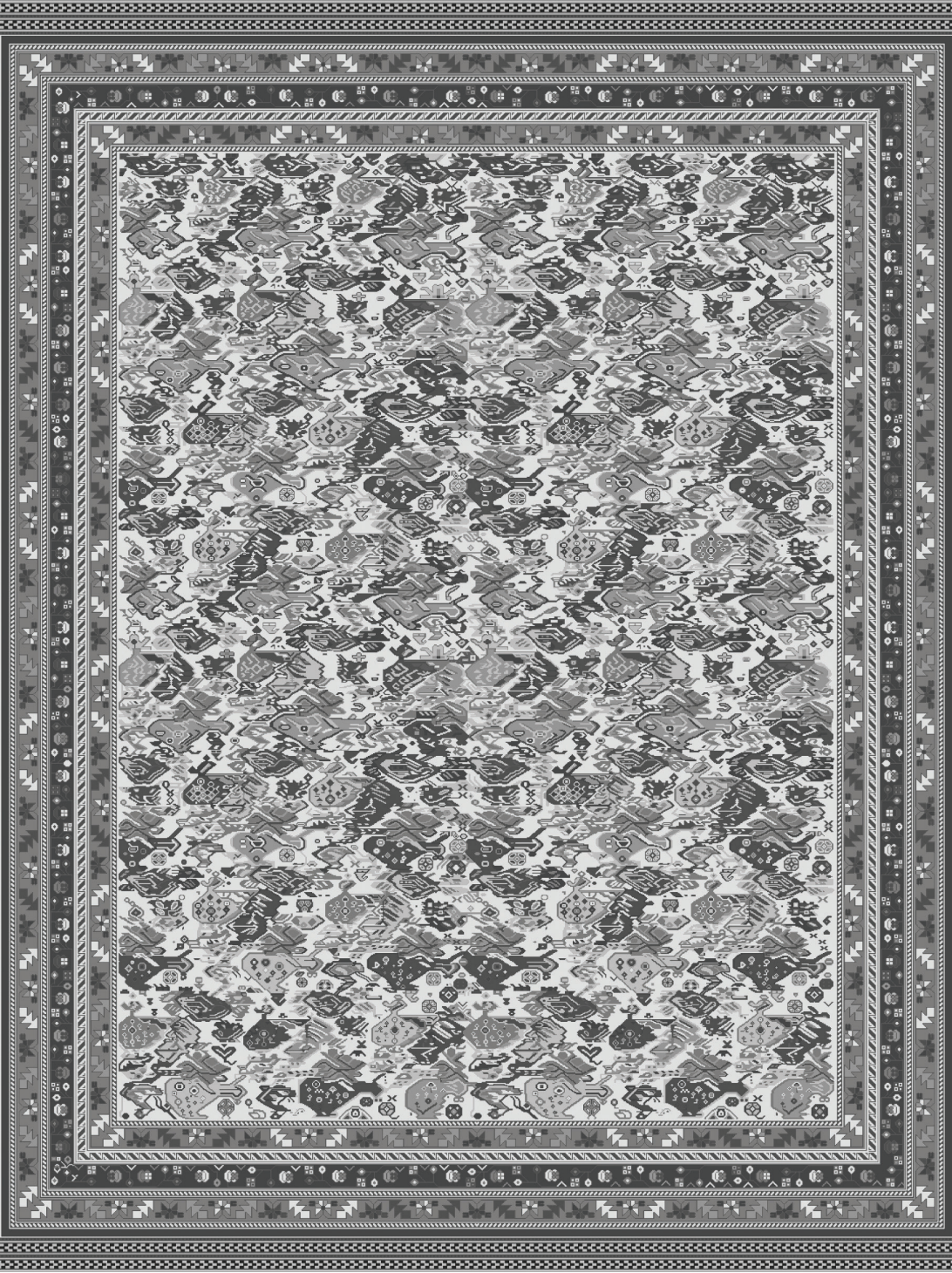


*Emblie*



*Persian Dawn*





Full pattern rendering shown as 9x12' rug