



SHIIR

TELLEN

Sinuous repetition yields dramatic - yet eminently versatile - interest as a line of silk snakes across a field of oxidized wool. The result? An ordered presentation of curves at once geometric and organic.



TELLEN

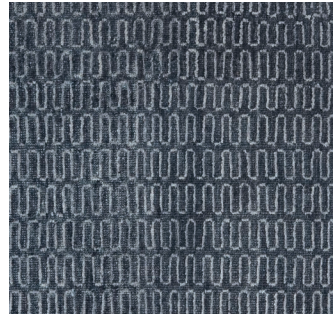


Origin
Made in India

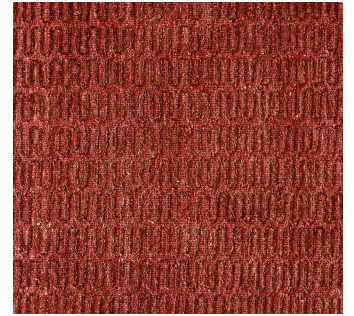
Material
Wool & Silk

Size
Shown as sample size rug

Oxford



Sequoia



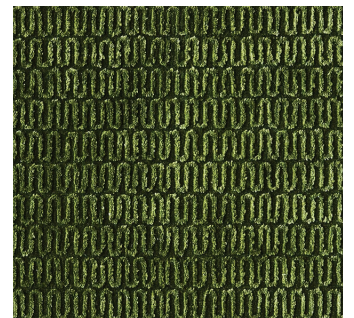
Shade



Twine



Wildwood



Aubergine



TELLEN



Origin

Made in India

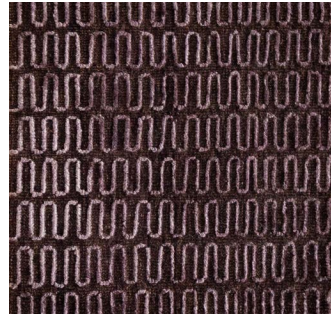
Material

Wool & Silk

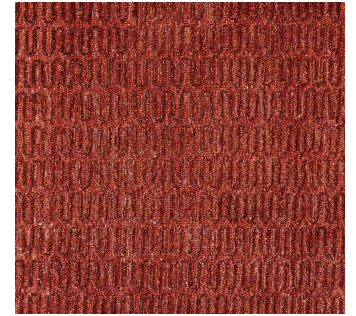
Size

Shown as sample size rug

Aubergine



Sequoia



Shade



Twine



Wildwood



Oxford



TELLEN

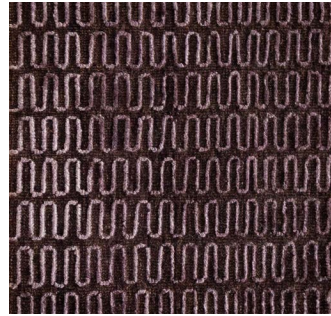


Origin
Made in India

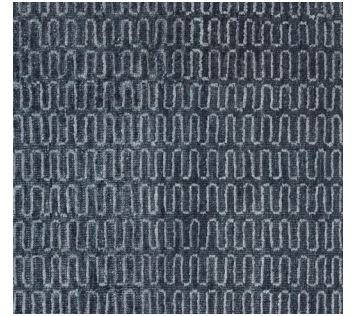
Material
Wool & Silk

Size
Shown as sample size rug

Aubergine



Oxford



Shade



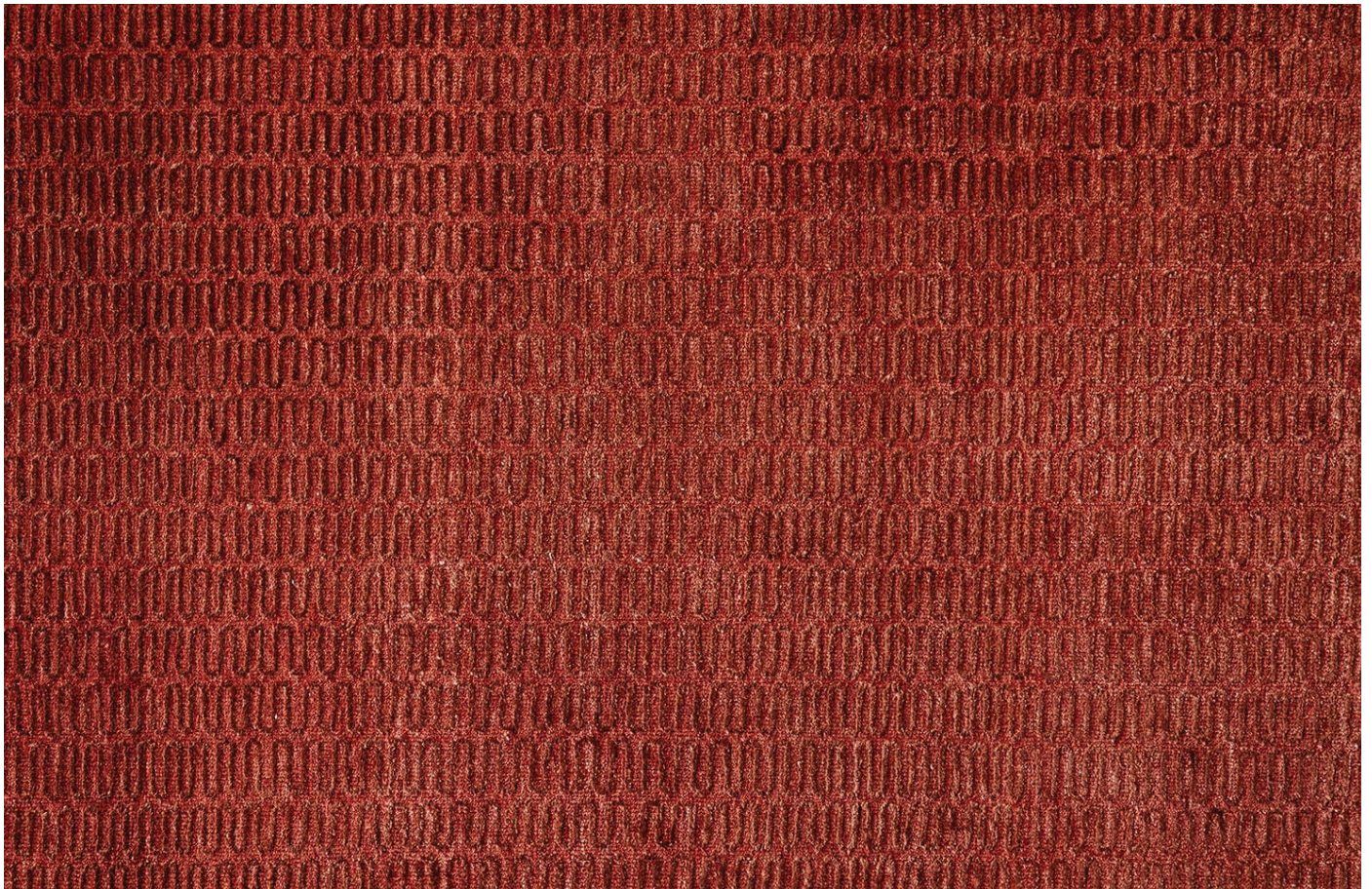
Twine



Wildwood



Sequoia



TELLEN



Origin

Made in India

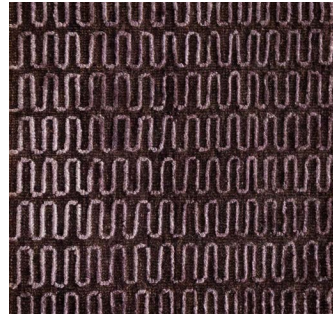
Material

Wool & Silk

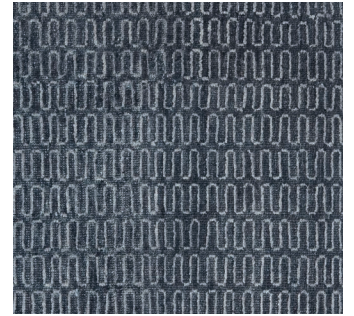
Size

Shown as sample size rug

Aubergine



Oxford



Sequoia



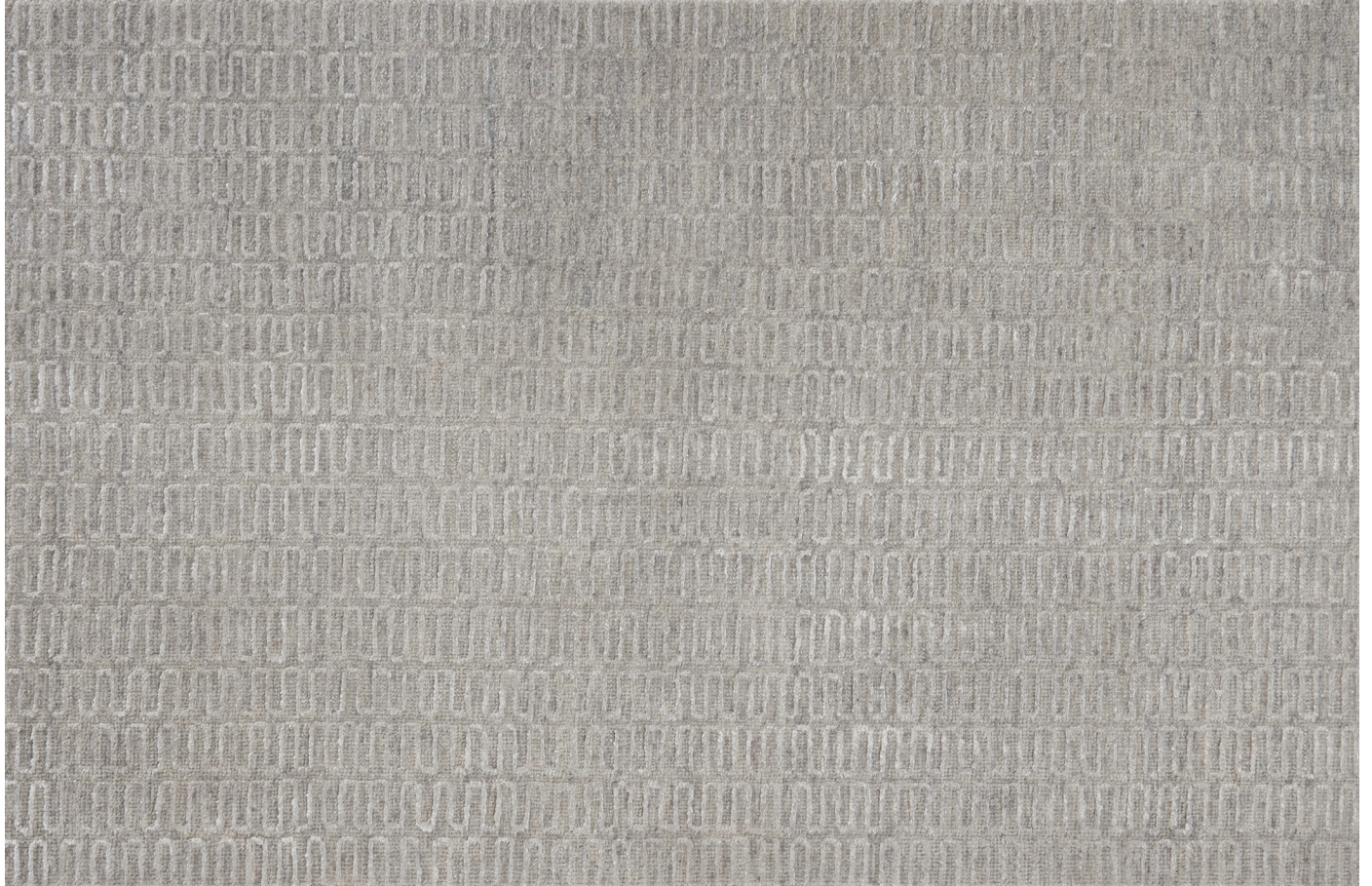
Twine



Wildwood



Shade



TELLEN

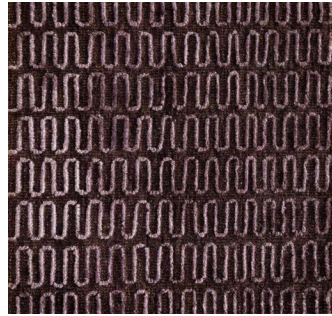


Origin
Made in India

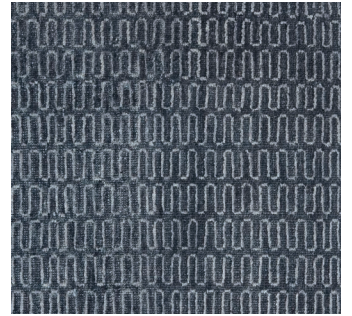
Material
Wool & Silk

Size
Shown as sample size rug

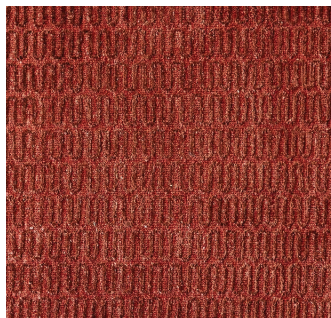
Aubergine



Oxford



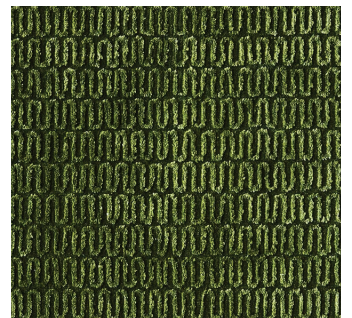
Sequoia



Shade



Wildwood



Twine



TELLEN

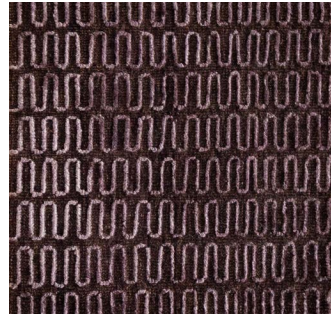


Origin
Made in India

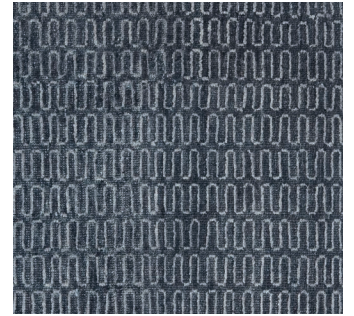
Material
Wool & Silk

Size
Shown as sample size rug

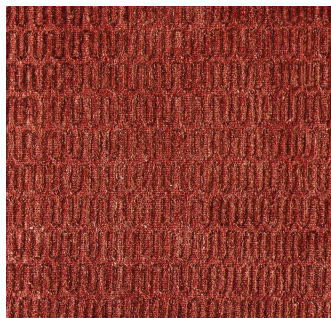
Aubergine



Oxford



Sequoia



Shade



Twine



Wildwood

