



SHIIR

LINEAGE COLLECTION

To view all of our collections
visit us at shiirrugs.com





LINEAGE COLLECTION

Like the ancient civilizations whose histories and cultures informed them, our Lineage Collection rugs are inspired interpretations of the world's finest antiques – all reimagined in forward-thinking style to meet contemporary needs. Though rooted in the richly evocative past – think spiced-fragrant souks, medieval imperial palaces, or the Caucasus Mountain passes of the Silk Road – Lineage Collection rugs are Old World, yet of the moment. Freshly colored, endlessly customizable, and versatile almost beyond imagination, they layer traditional, transitional, and contemporary interiors with ease and soulful flexibility. (And should you desire authentic, original antique rugs, we've got a finely curated selection of those, too!)

Please visit shirrugs.com, or contact your SHIR sales representative to learn more.

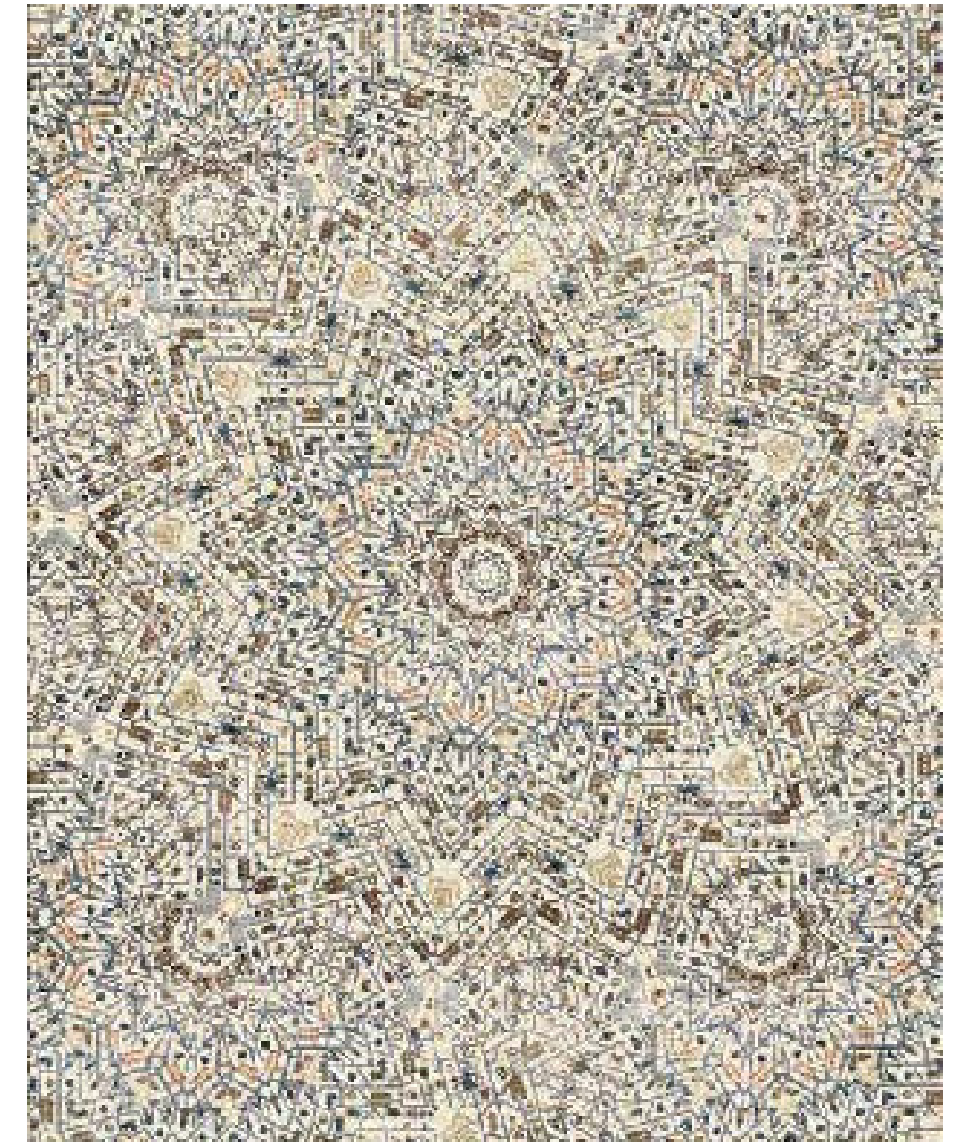
POSSIBLE PATTERN ITERATIONS



Kada Tulip - Wool and Silk



Kada Pattern Iterations - Runner



Kada Pattern Iterations

Lineage Collection rugs – like Kada, shown here – can be customized into myriad possible pattern iterations. For example, add or remove borders. Eliminate center medallions. Make them into runners. The options are limited only by your imagination!



SHARRA

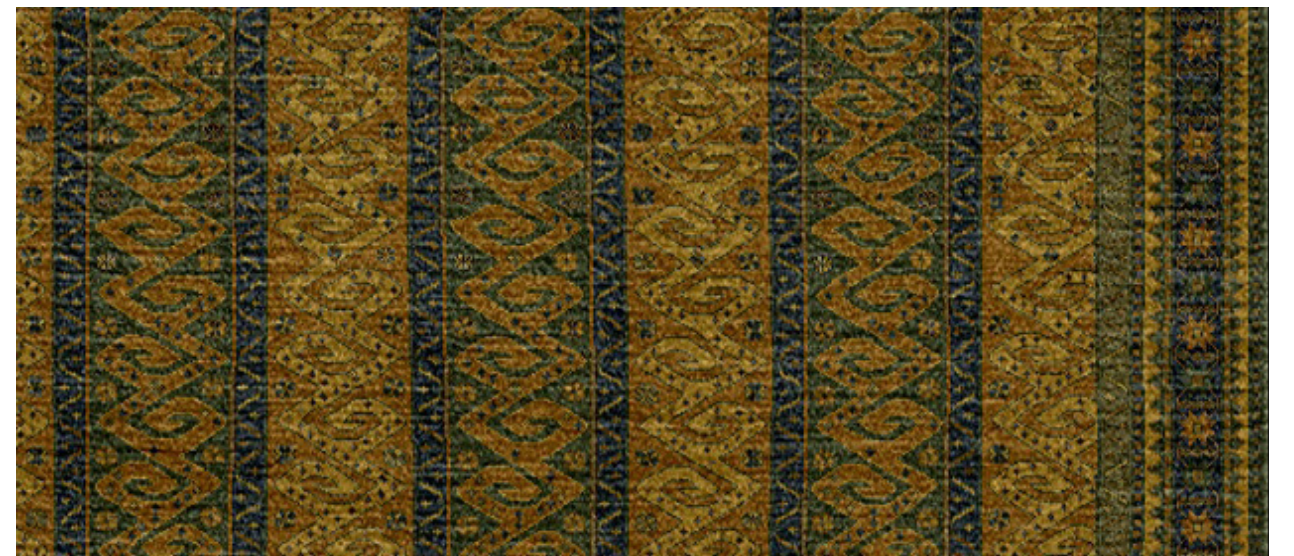
Like the elevations that soar and stretch between the peaks and valleys of the Caucasus mountains, Noa's energy, too, is derived from visual movement. From the trinity of serpentine bands that winds and wends through its deeply dimensional field, to the staccato-like punctuations within its border, Noa traverses foreground and background with ease.



Sharra, Noa - Wool



Sharra, Dolomite - Wool



Sharra, Jade - Wool



Sharra, Noa - Wool



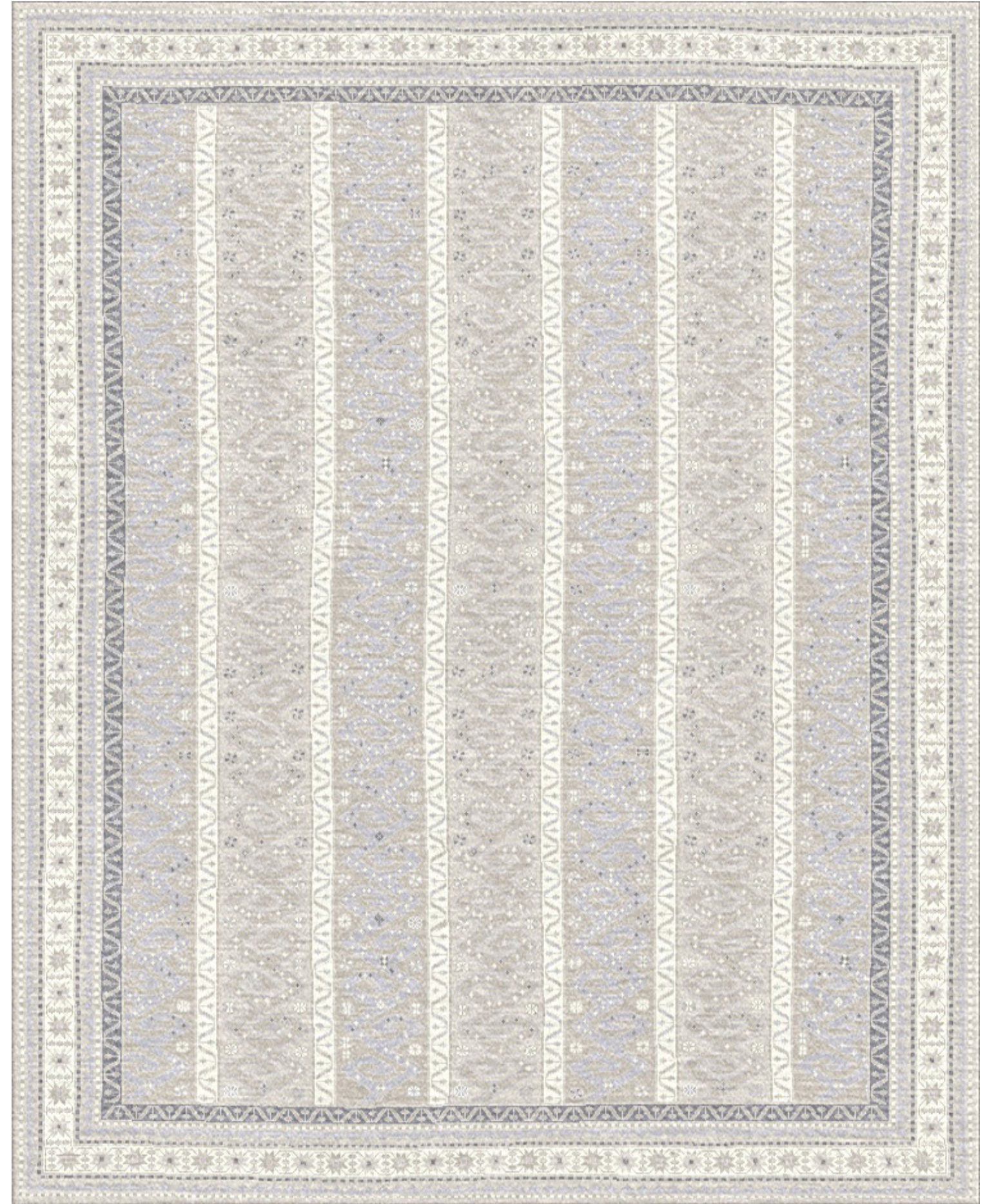
Sharra, Noa - Wool



Sharra, Dolomite - Pattern



Sharra, Dolomite - Detail



Sharra, Dolomite - Wool



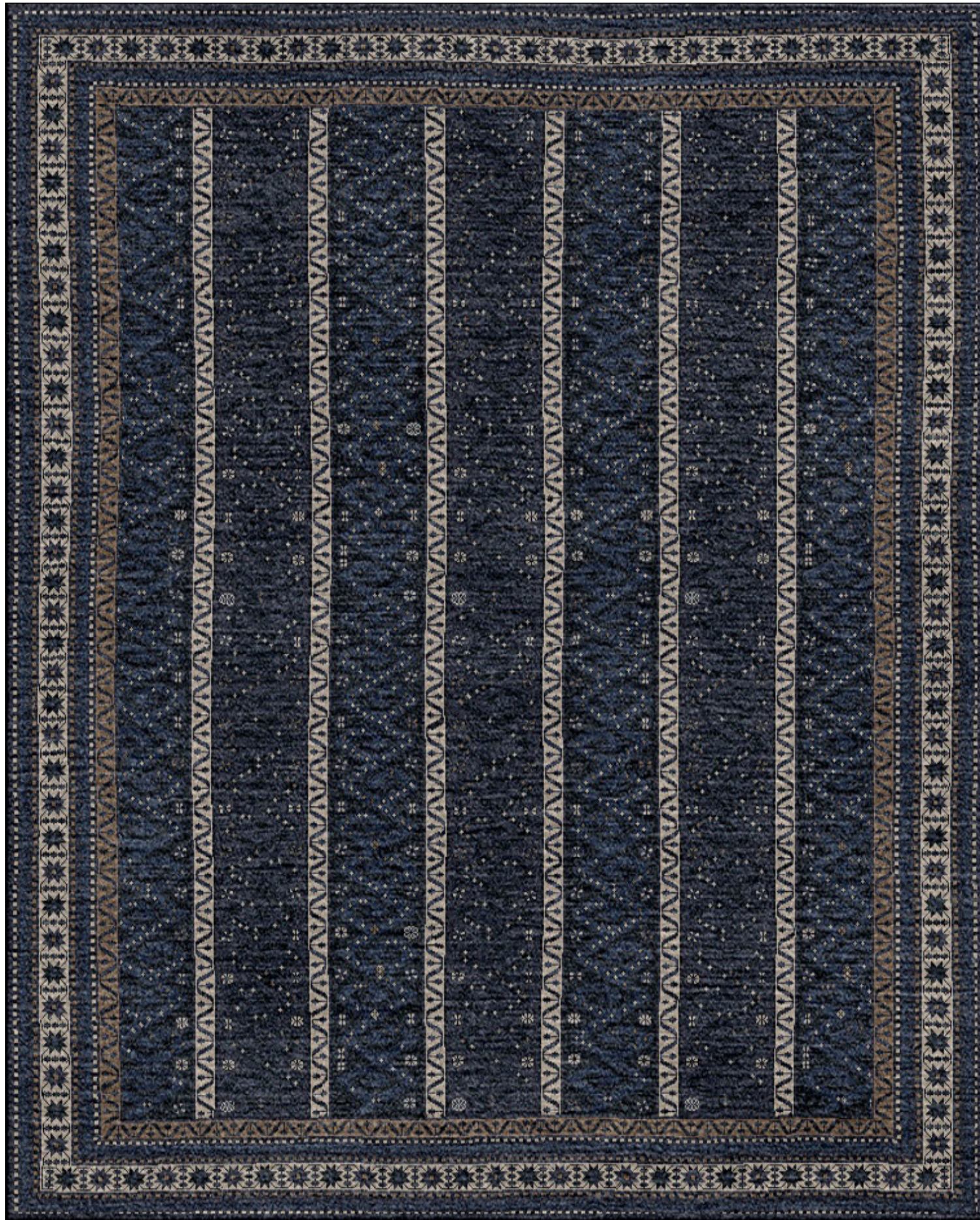
Sharra, Jade - Pattern



Sharra, Jade - Detail



Sharra, Jade - Wool



Sharra, Noa - Wool



Sharra, Noa - Pattern



Sharra, Noa - Detail



BAHTIA

Bordered by primitively rendered organic elements, including rosettes, that balance its medallion-free, geometric field, Bahtia's boundless versatility adapts easily to both traditional and more contemporary interiors.



Bahtia, Platinum - Wool



Bahtia, Zarrine - Wool



Bahtia, Altan - Wool



Bahtia, Altan - Wool



Bahtia, Platinum - Wool



Bahtia, Platinum - Pattern



Bahtia, Platinum - Detail



Bahtia, Zarrine - Pattern



Bahtia, Zarrine - Detail



Bahtia, Zarrine - Wool



Bahtia, Altan - Wool



Bahtia, Altan - Pattern



Bahtia, Altan - Detail



ISLA

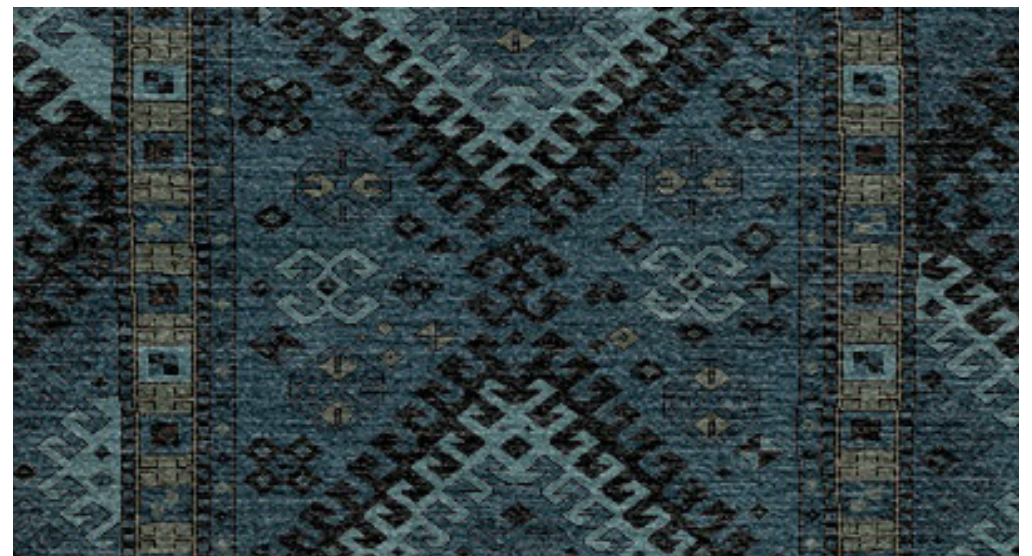
Inspired by the steeply rugged topography of the Kazak mountains, Isla's angled design aspects in both border and field – including twin medallions – are at once typical and revolutionary, thanks to fresh new colorway choices.



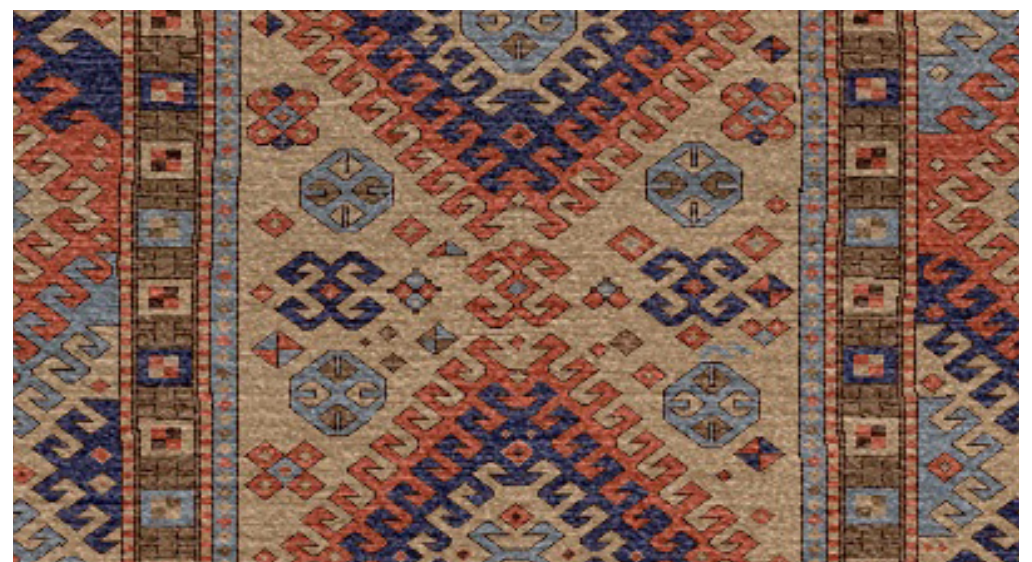
Isla, Tribute - Wool



Isla, Eternal - Wool



Isla, Nautilus - Wool



Isla, Tribute - Wool



Isla, Eternal - Pattern



Isla, Eternal - Detail



Isla, Eternal - Wool



Isla, Nautilus - Pattern



Isla, Nautilus - Detail



Isla, Nautilus - Wool



Isla, Tribute - Wool



Isla, Tribute - Pattern



Isla, Tribute - Detail



SEN

Intricate in design yet fuss-free in approach, Sen personifies juxtaposition. Consider its crisply elongated vertical orientation – and the geometry of its alternating horizontal stripes. Or its ages-old Persian pedigree – and its simultaneous suitability to contemporary interiors. The result? An interplay of aesthetic energy and movement.



Sen, Cham - Wool



Sen, Reese - Wool

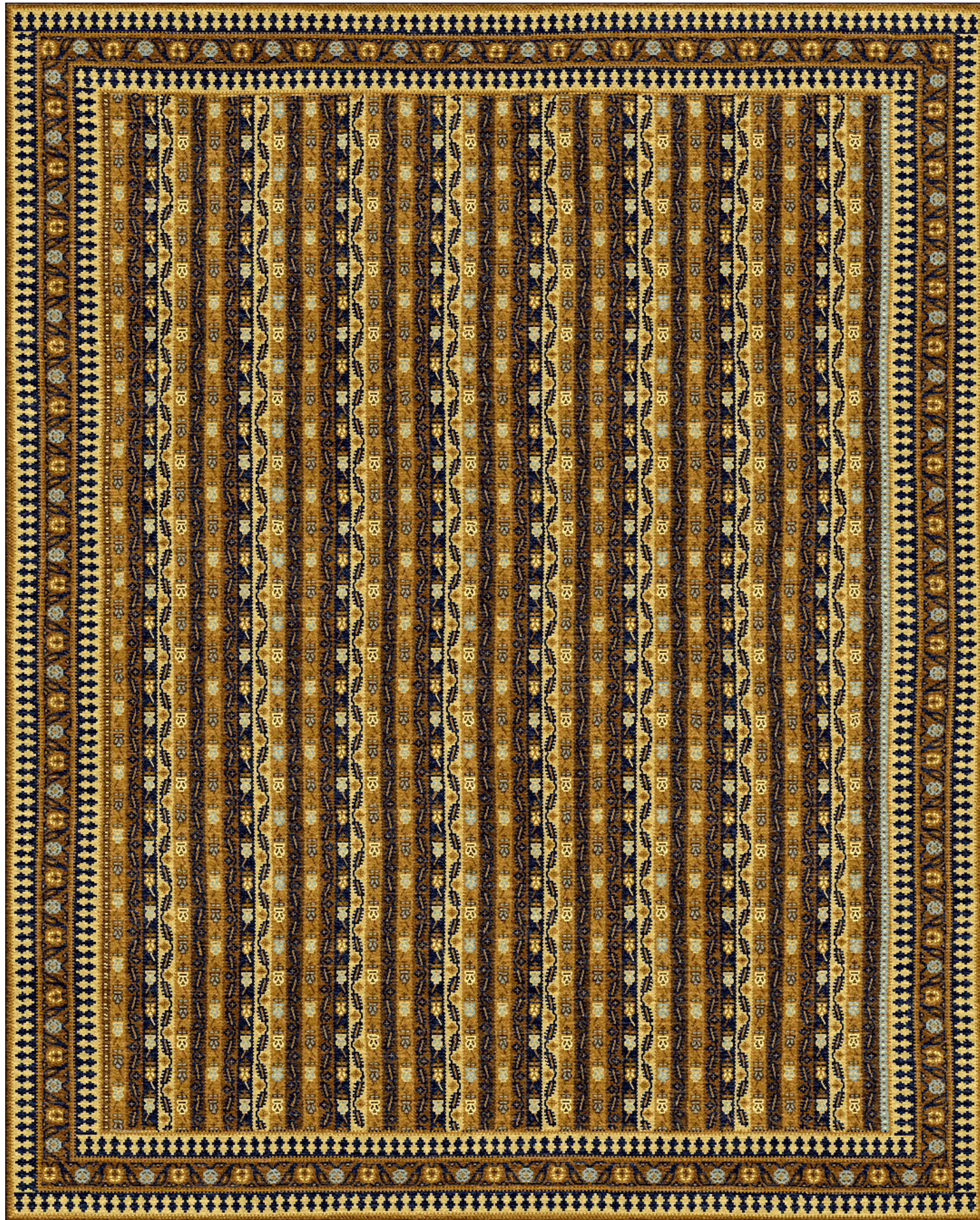


Sen, Benami - Wool



Sen, Benami - Wool





Sen, Cham - Wool



Sen, Cham - Pattern



Sen, Cham - Detail



Sen, Reese - Wool



Sen, Reese - Pattern



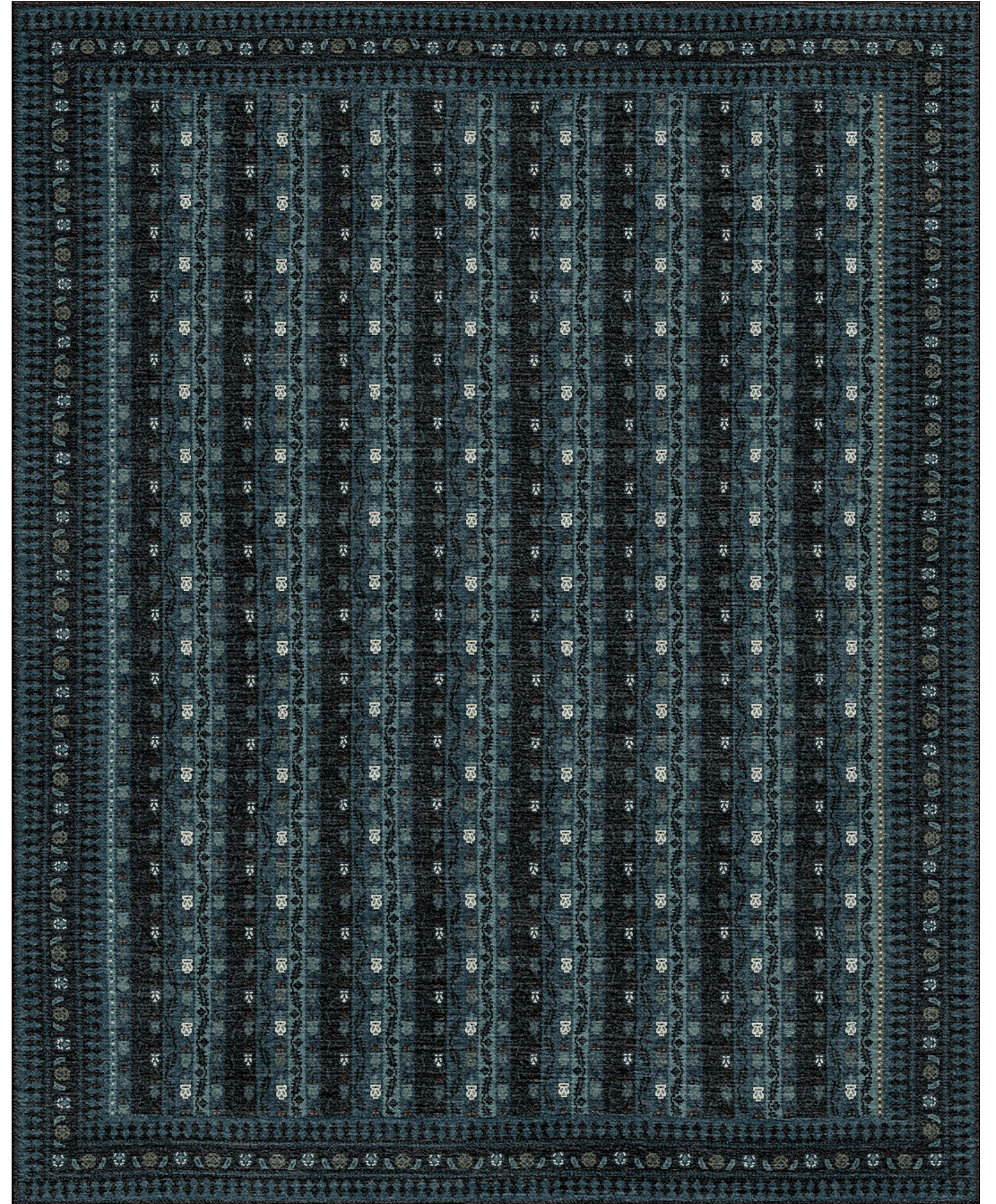
Sen, Reese - Detail



Sen, Benami - Pattern



Sen, Benami - Detail



Sen, Benami - Wool



TABI

Along the Silk Road, canopies of royal Narvan trees. Branched and twigged, they stand tall. Tangled. And magnificent. A celebration of Persia's arboreal bounty, they inspired Tabi's tree-like design – an organically harmonious balance between border and field.



Tabi, Camoca - Wool and Silk



Tabi, Bridge - Wool and Silk



Tabi, Cascade - Wool and Silk



Tabi, Camoca - Wool and Silk



Tabi, Camoca



Tabi, Camoca



Tabi, Camoca - Wool and Silk



Tabi, Cascade - Wool and Silk



Tabi, Cascade - Pattern



Tabi, Cascade - Detail



Tabi, Bridge - Pattern



Tabi, Bridge - Detail



Tabi, Bridge - Wool and Silk



CARIFF

Woven centuries ago by tribal Kurds who revered living forms yet dared not presume to replicate their perfection, Cariff's forbearers were at once stylized and abstract – like the exotic animals depicted in Cariff itself. Likely originally commissioned for the most royal of residences, Cariff today is at home in almost any design scheme imaginable.



Cariff, Light Ash - Wool



Cariff, Allure - Wool



Cariff, Bonsai - Wool



Cariff, Bonsai - Wool



Cariff, Light Ash - Wool



Cariff, Light Ash - Pattern



Cariff, Light Ash - Detail



Cariff, Allure - Pattern



Cariff, Allure - Detail



Cariff, Allure - Wool



Cariff, Bonsai - Wool



Cariff, Bonsai - Pattern



Cariff, Bonsai - Detail

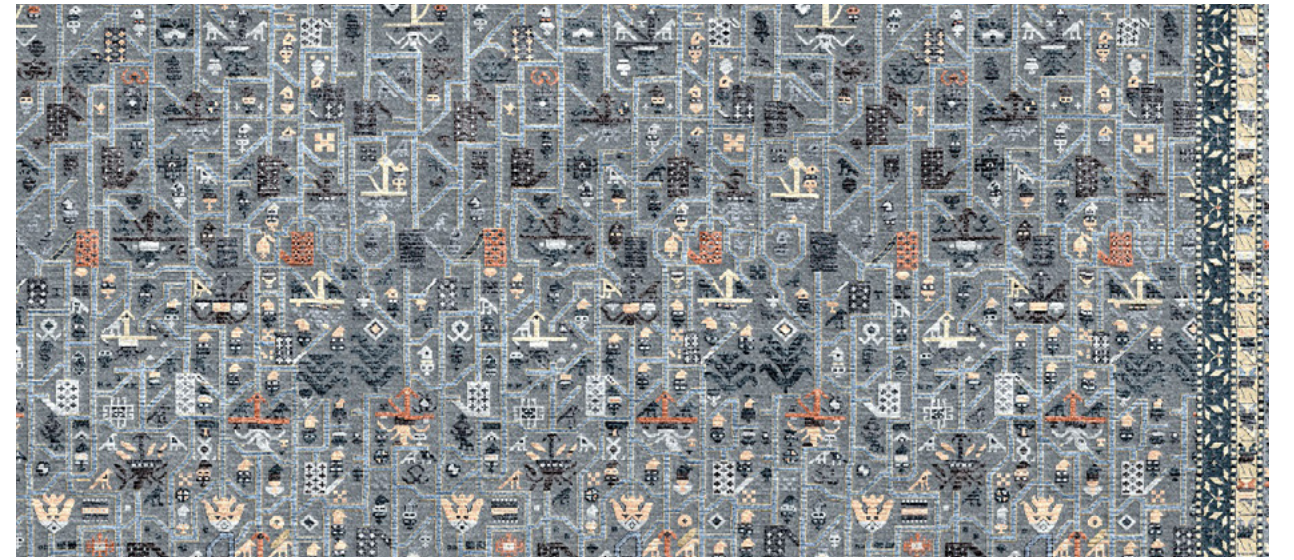


KADA

An intricately detailed, playful balance of medallion-like shields and plentiful geometric figures, Kada's design roots can be traced to a small Persian village famed for producing artistically distinguished rugs. At ease in both traditional and contemporary design schemes, Kada is faithful to history – and forward-thinking in expression.



Kada Tulip - Wool and Silk



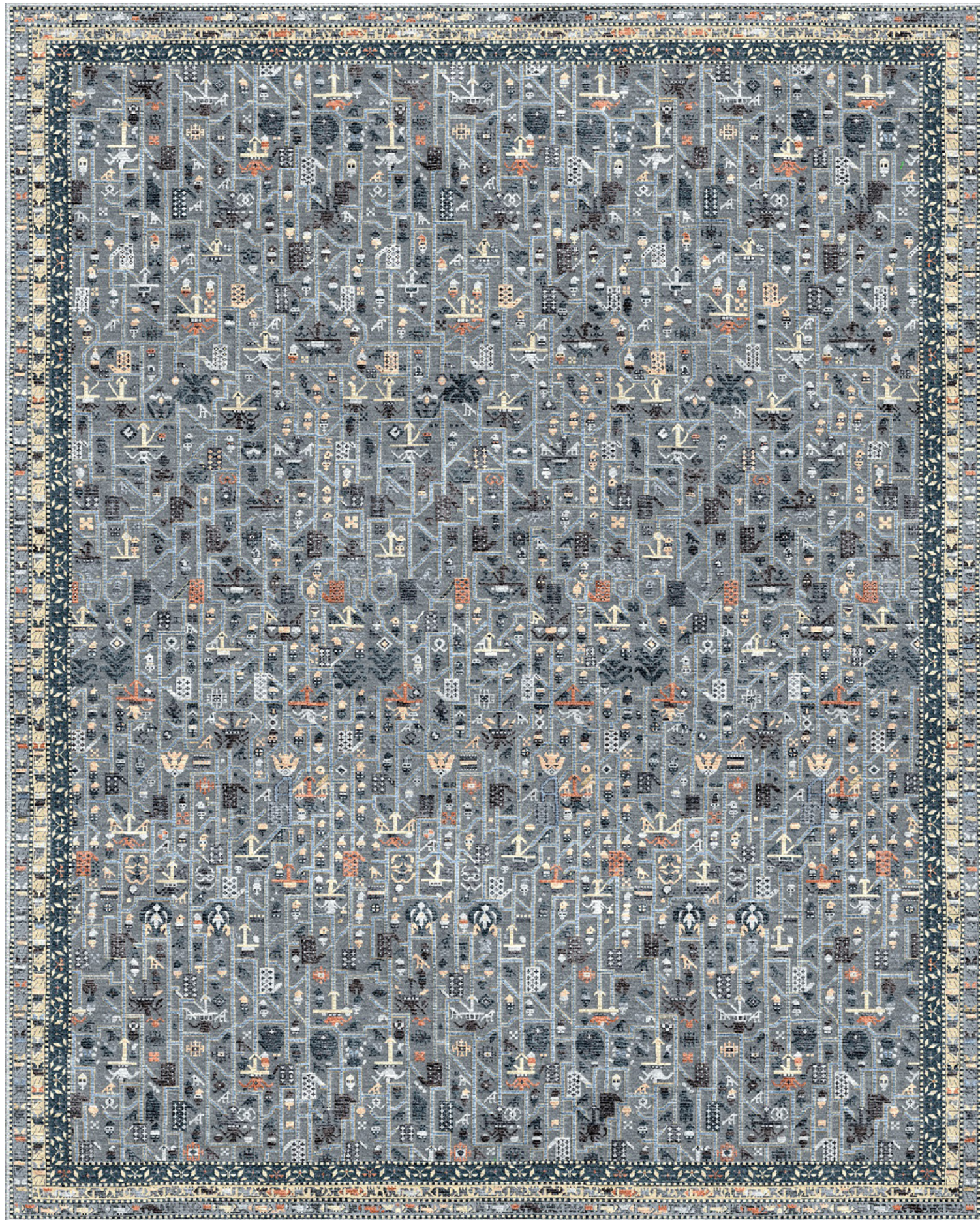
Kada, Larin - Wool and Silk



Kada, Chutney - Wool and Silk



Kada Tulip - Wool and Silk



Kada, Larin - Wool and Silk



Kada, Larin - Pattern



Kada, Larin - Detail



Kada, Chutney - Pattern



Kada, Chutney - Detail



Kada, Chutney - Wool and Silk



Kada Tulip - Pattern



Kada Tulip - Detail



Kada Tulip - Wool and Silk



LYRA

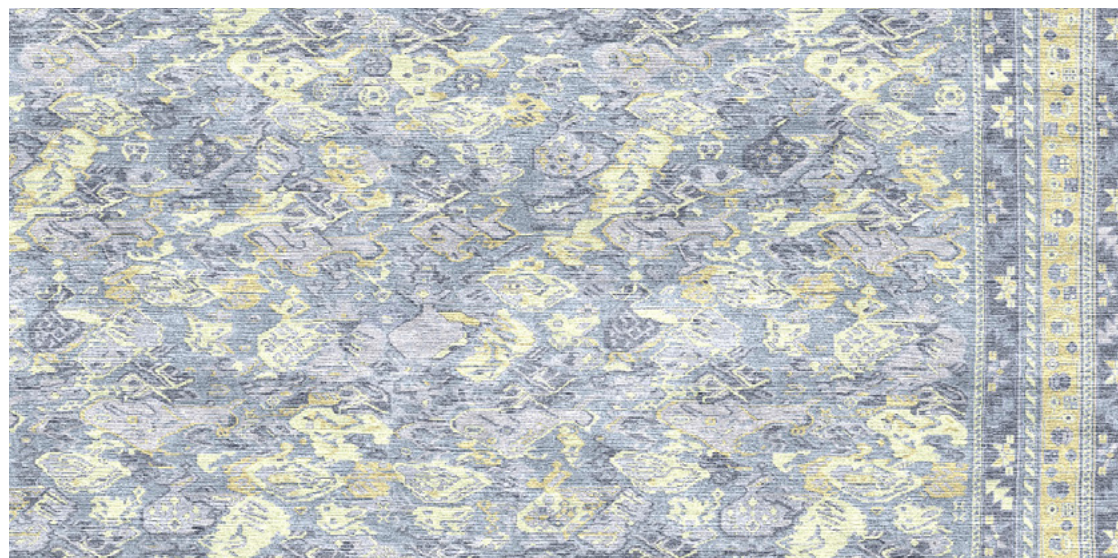
Perhaps the most influential muse of all time, Mother Nature's floral wonders are represented here, like so many art forms, in uniquely European fashion: overall in design, stylized and angular in interpretation, and becoming of castle, palace, folly – or their edgier, modern-day equivalents.



Lyra, Emblic - Silk



Lyra, Caspian - Silk



Lyra, Persian Dawn - Silk



Lyra, Persian Dawn - Silk



Lyra, Emblic - Pattern



Lyra, Emblic - Detail



Lyra, Emblic - Silk



Lyra, Caspian - Silk



Lyra, Caspian - Pattern



Lyra, Caspian - Detail



Lyra, Persian Dawn - Silk



Lyra, Persian Dawn - Pattern



Lyra, Persian Dawn - Detail



JERRAN

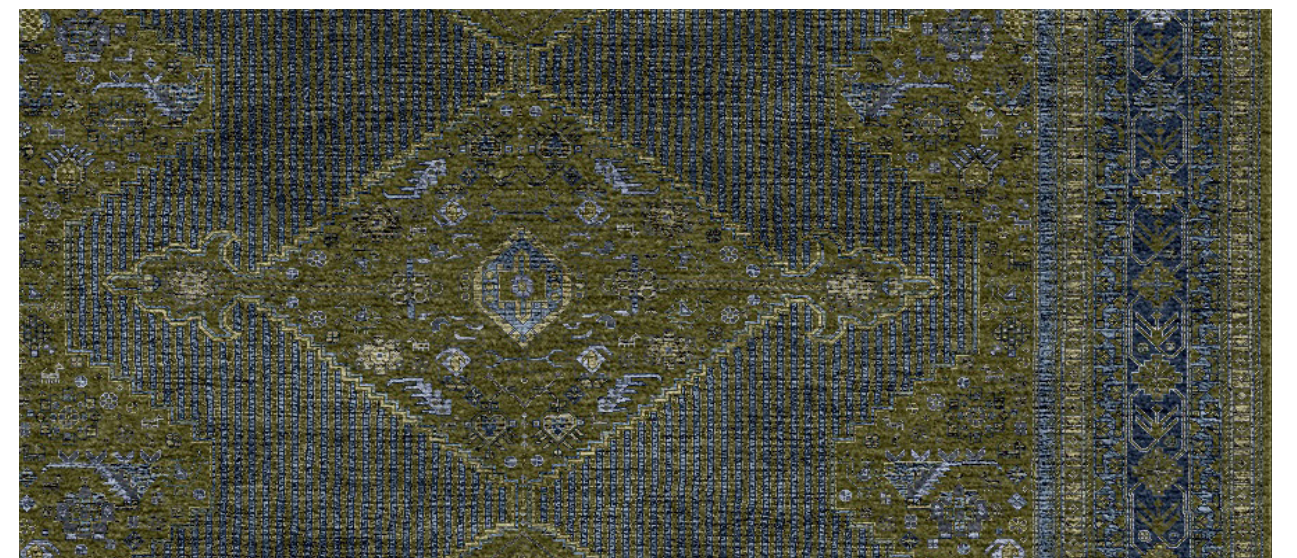
Jerran is bold, yes – but more so, balanced. A fusion of border and field that reads, at first glance, as one. Delve more deeply, however, and geometric tension becomes apparent: prominent medallions seem to recede; vertical caning is subtly revealed. Or is it the opposite? Like mysterious lands themselves, the answer is achingly indeterminate.



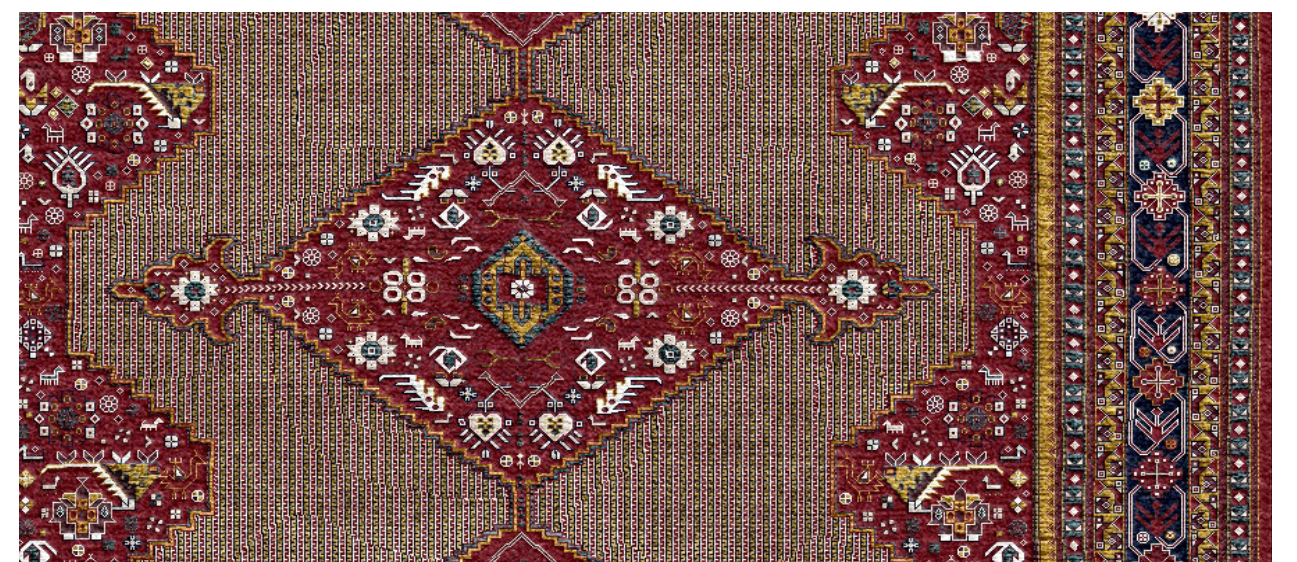
Jerran, Masala - Silk and Silk/Wool Blend



Jerran, White Jasper - Silk and Silk/Wool

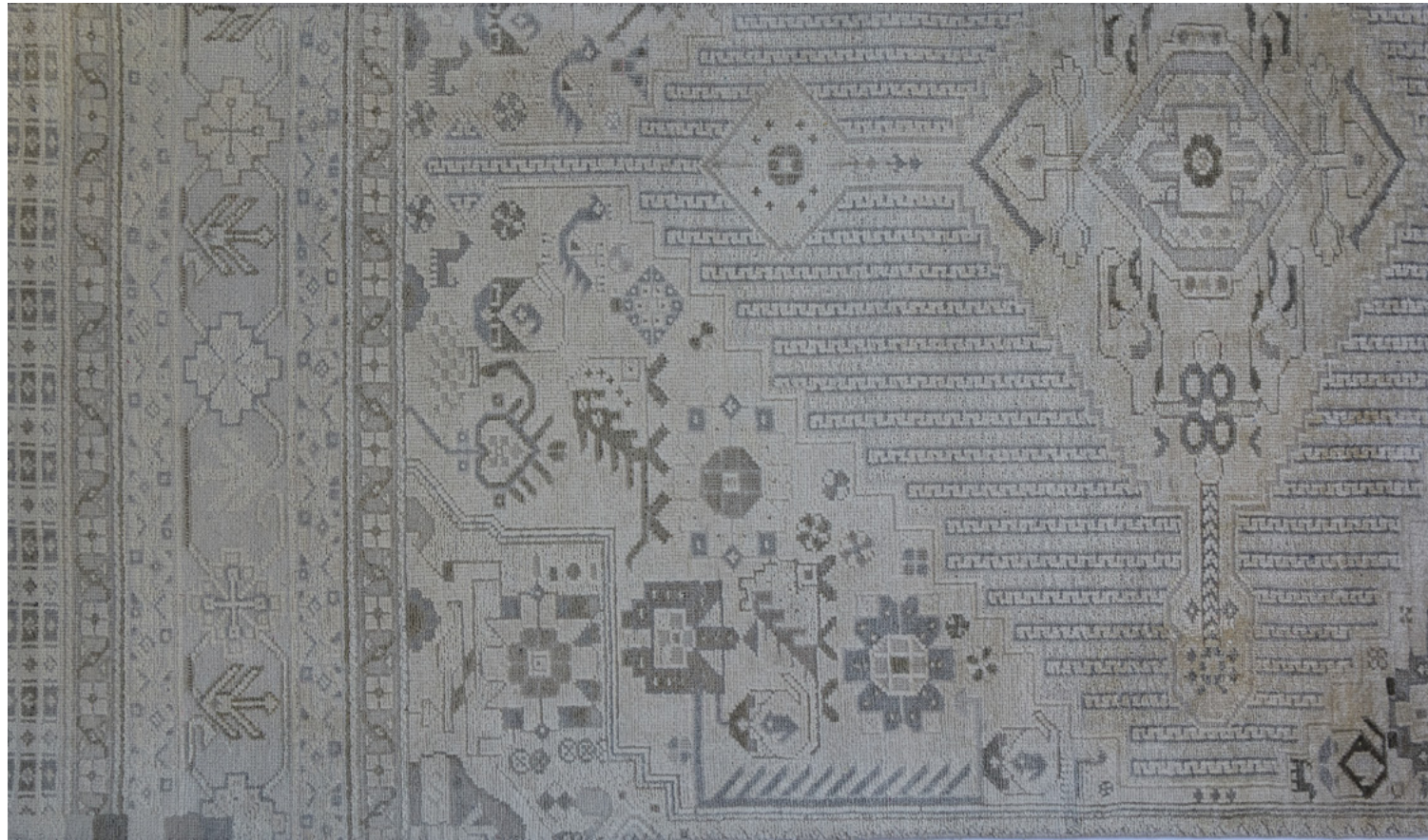


Jerran, Badian - Silk and Silk/Wool Blend



Jerran, Masala - Silk and Silk/Wool Blend

Colorways are representations only. Please refer to actual rug samples for most accurate colorations.



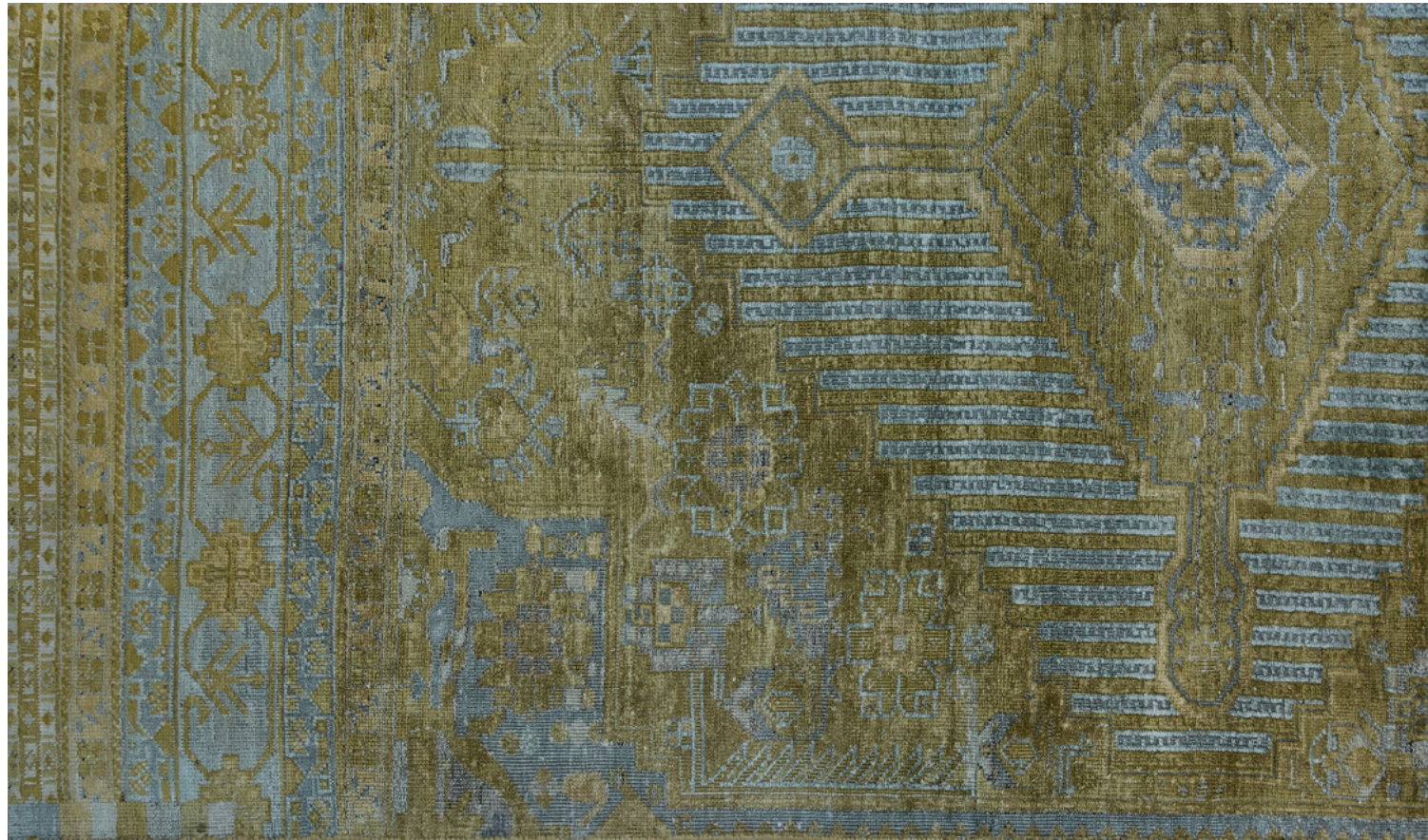
Jerran, White Jasper - Pattern



Jerran, White Jasper - Detail



Jerran, White Jasper - Silk and Silk/Wool Blend



Jerran, Badian - Pattern



Jerran, Badian - Detail



Jerran, Badian - Silk and Silk/Wool Blend



Jerran, Masala - Silk and Silk/Wool Blend



Jerran, Masala - Pattern



Jerran, Masala - Detail



SHIR

WHERE INNOVATION MEETS TRADITION

Please contact your SHIR sales representative for additional information - or to schedule a video call to learn more!

For custom sizes and colors call 312.828.0400

©2021 SHIR RUGS. ALL RIGHTS RESERVED.