



SHIIR

BORDURE

Like African Tuaregs – nomadic tribal wanderers who first journeyed, centuries ago, across a continent to expand their influence – Bordure is enclosed by borders. Not of seas or mountains, but of woven leather and linen, in a welcome mélange of geometric simplicity and exuberant coloration. Limitless in its application, Bordure is both restrained and playful – and at ease almost anywhere your own design journeys may lead.

BORDURE



Origin

Made in India

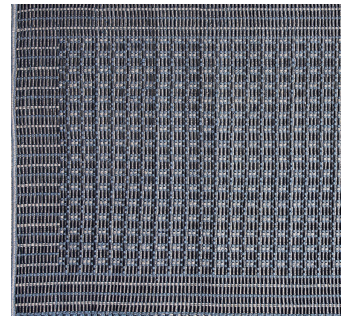
Material

Linen, Leather

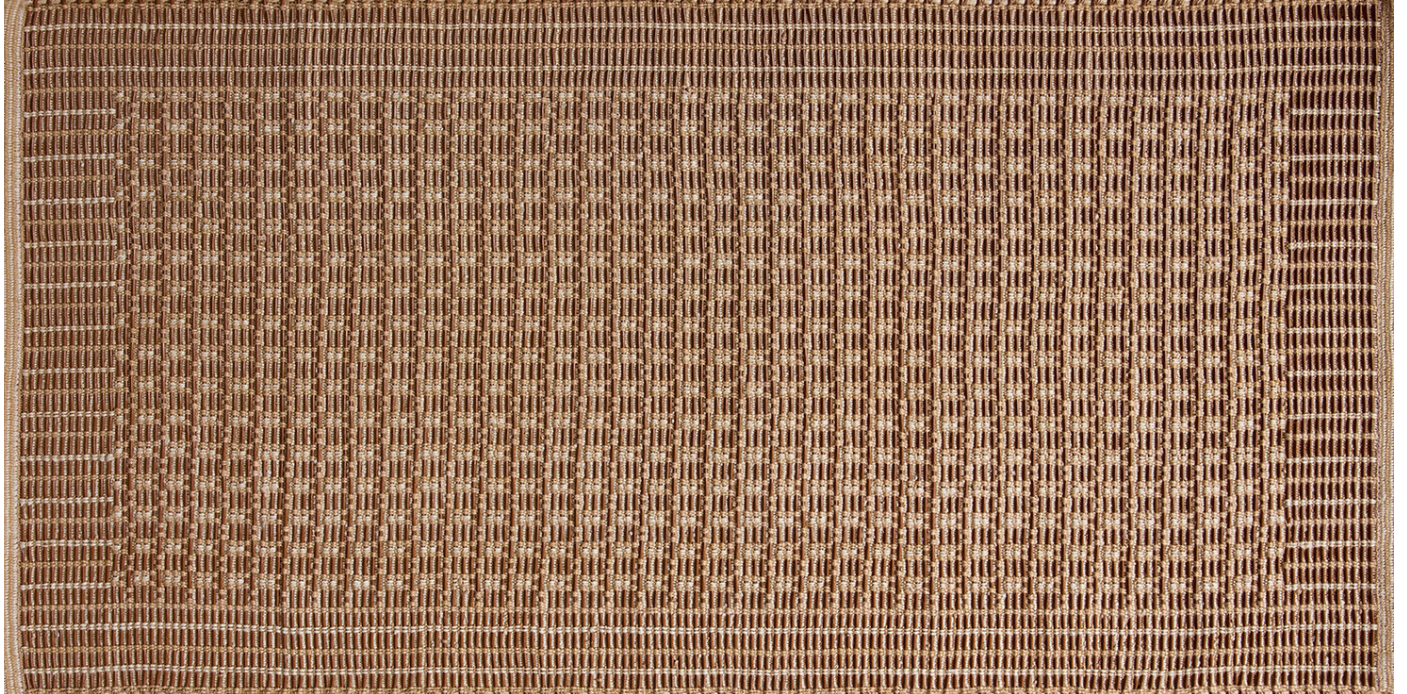
Size

Shown as sample size rug

Cielle



Café



BORDURE



Origin

Made in India

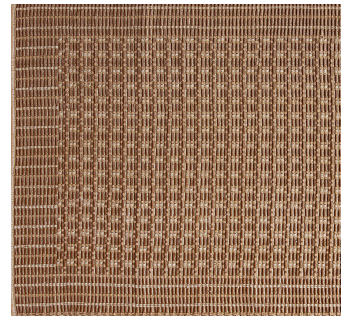
Material

Linen, Leather

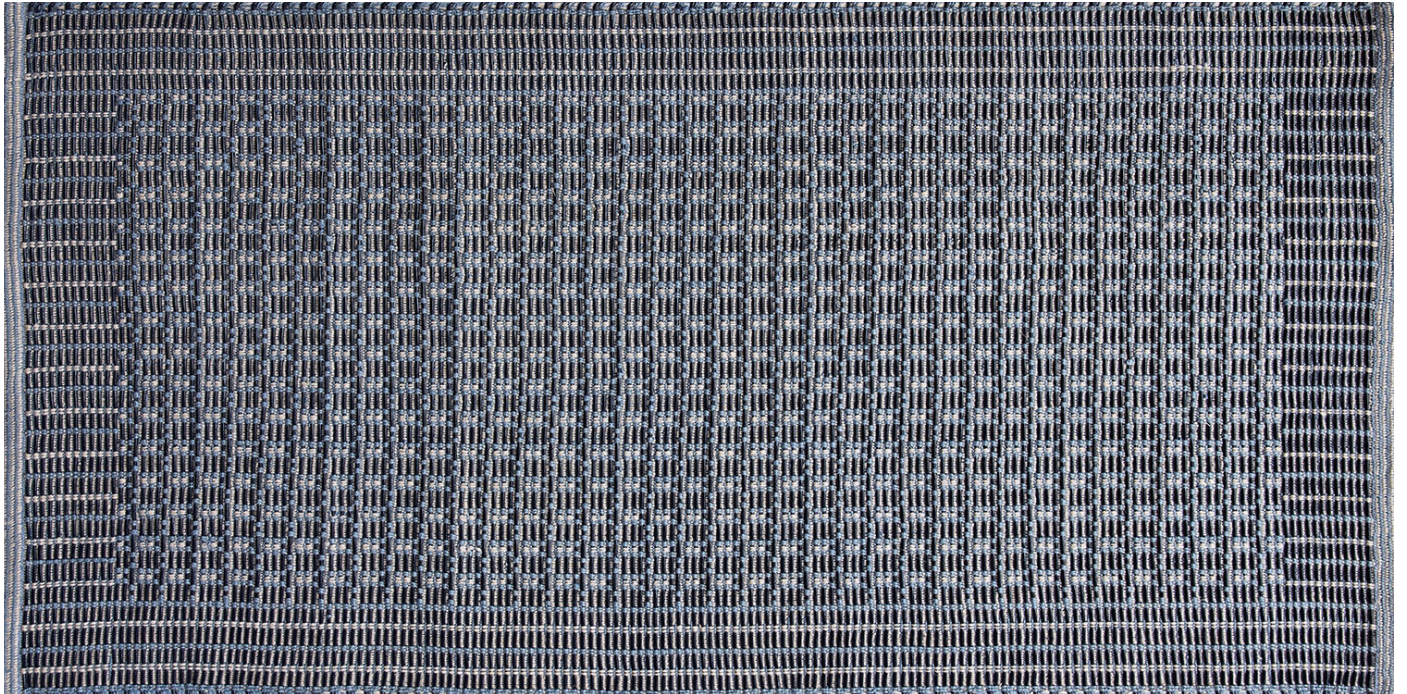
Size

Shown as sample size rug

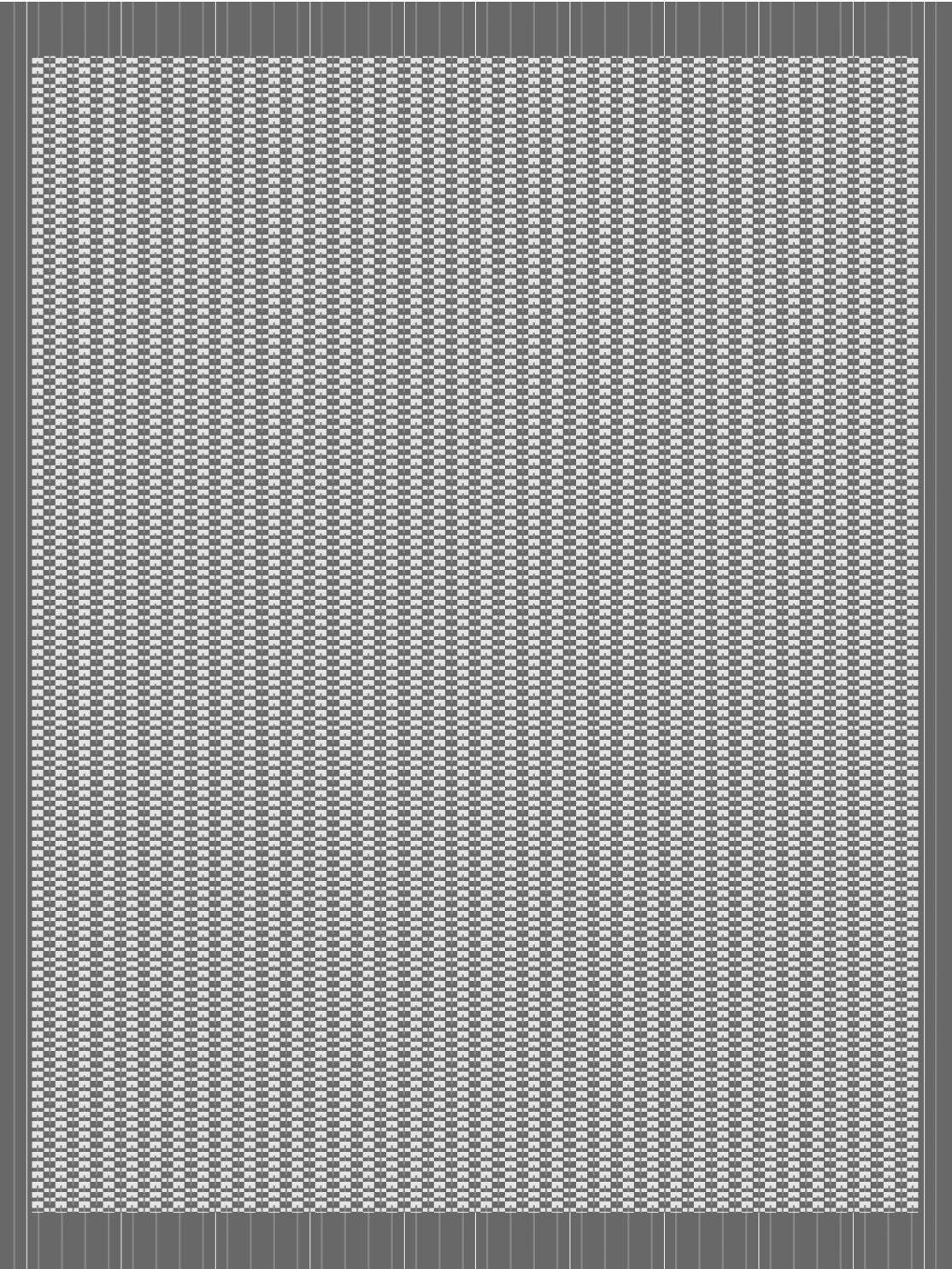
Café



Cielle



BORDURE



Full pattern rendering shown as 9x12' rug