



SHIR

## BOTANICA

An all-wool version of Vine, Botanica's densely textured, trailing procession of embroidery is reminiscent of nature's winding, wending tendrils.

# BOTANICA



## *Origin*

*Made in India*

## *Material*

*Wool flatweave with wool embroidery*

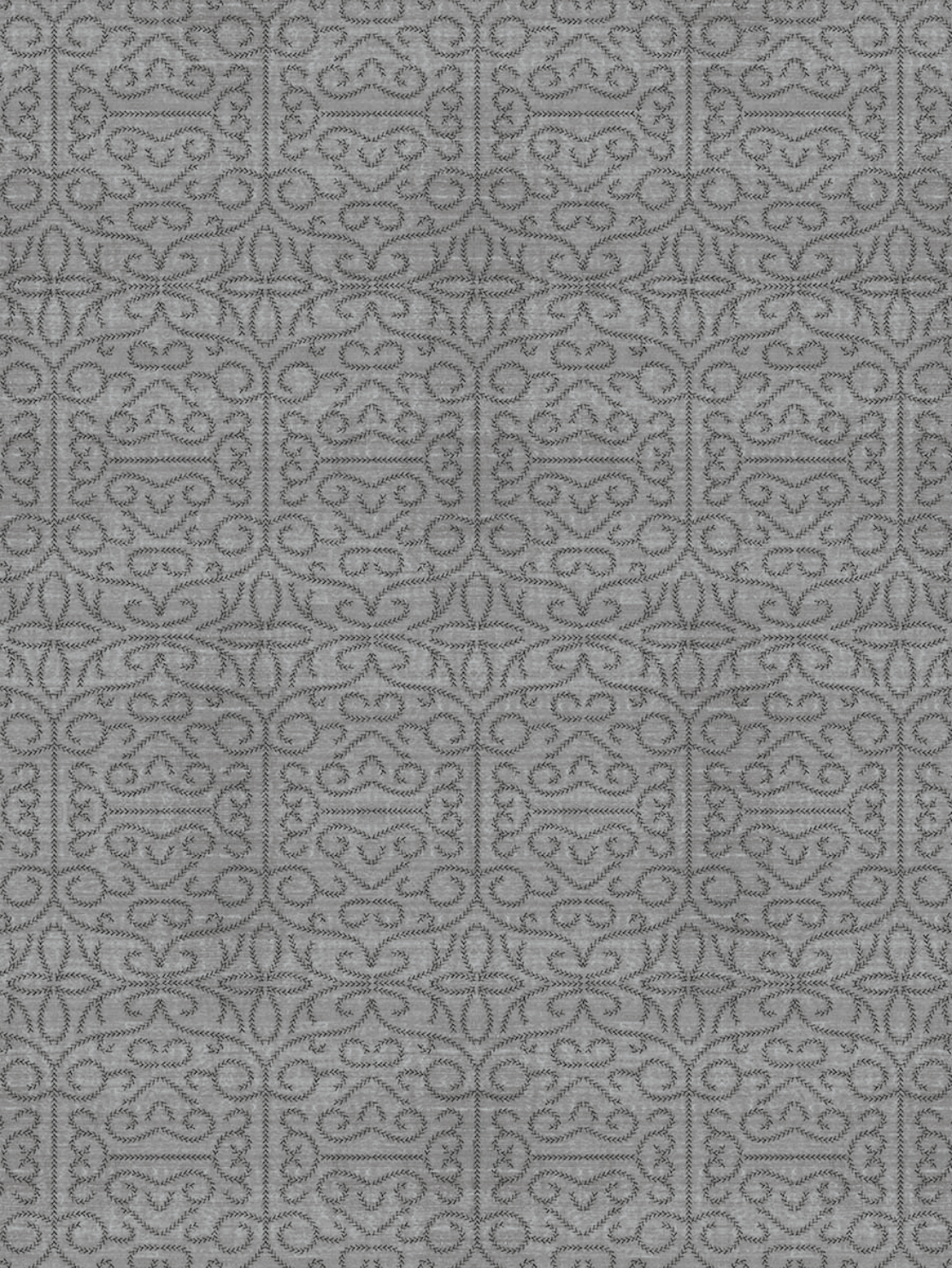
## *Size*

*Shown as sample size rug*

## *Halo*







*Full pattern rendering shown as 9x12' rug*