



SHIIR

## CALYPSO

Calypso is built on movement. Thick to thin. Light to shadow. A pattern that shifts as it's regarded, yielding subtle visual illusions across the surface. Bright fibers lend clarity, texture supplies depth. Quietly kinetic.

# CALYPSO

*Origin*

*India*

*Material*

*Linen & Silk*

*Construction*

*Hand-knotted Persian*

*Size*

*Shown as sample size rug*



*Opaline*



*Polar*



*Prisma*

# CALYPSO

*Origin*

*India*

*Material*

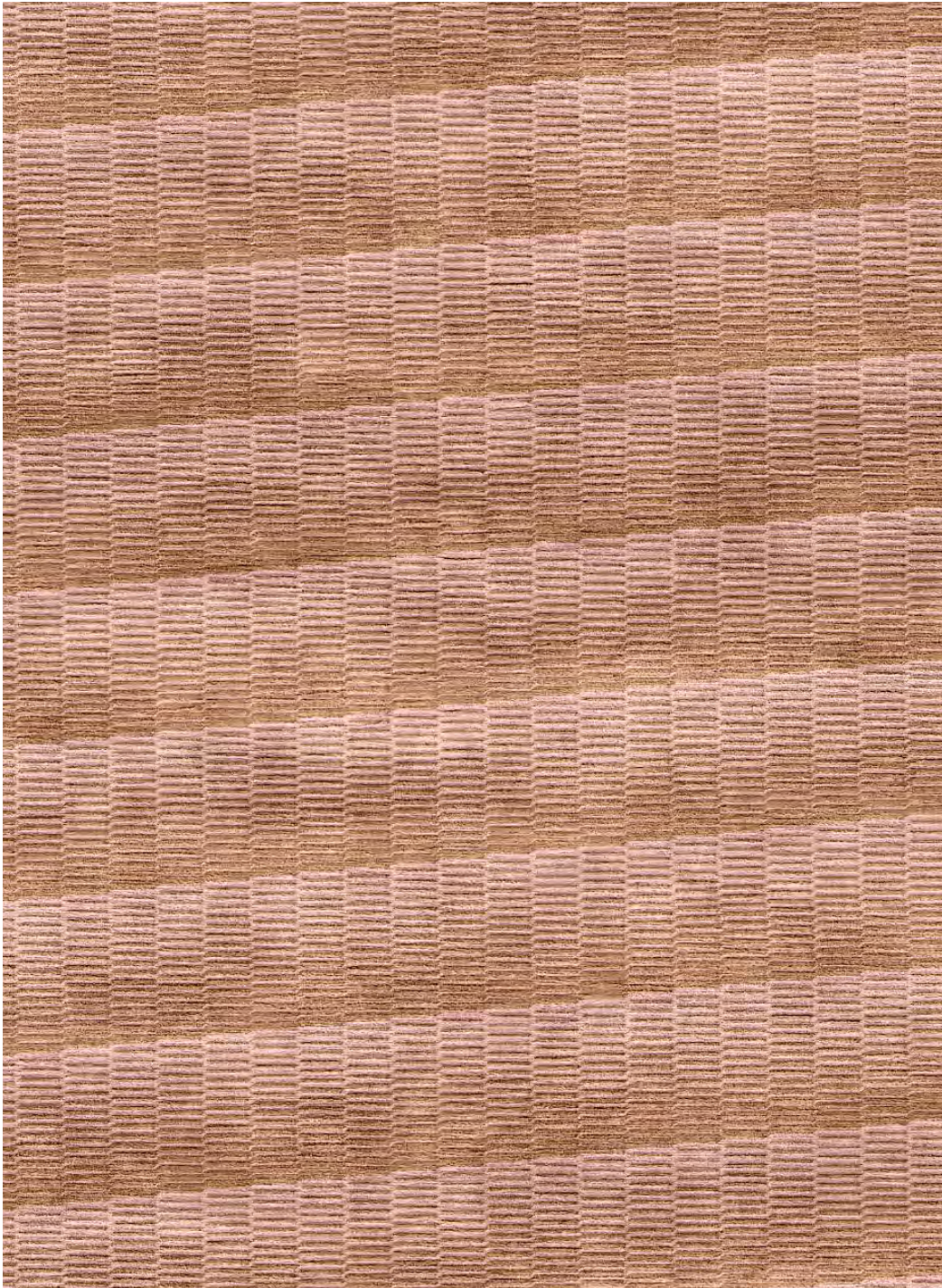
*Linen & Silk*

*Construction*

*Hand-knotted Persian*

*Colorway*

*Opaline*



*Photo of sample rug*

*Full pattern rendering shown as 9x12' rug*



# CALYPSO

*Origin*

India

*Material*

Linen & Silk

*Construction*

Hand-knotted Persian

*Colorway*

Polar



*Photo of sample rug*

*Full pattern rendering shown as 9x12' rug*



# CALYPSO

*Origin*

*India*

*Material*

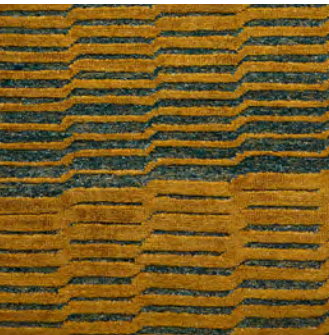
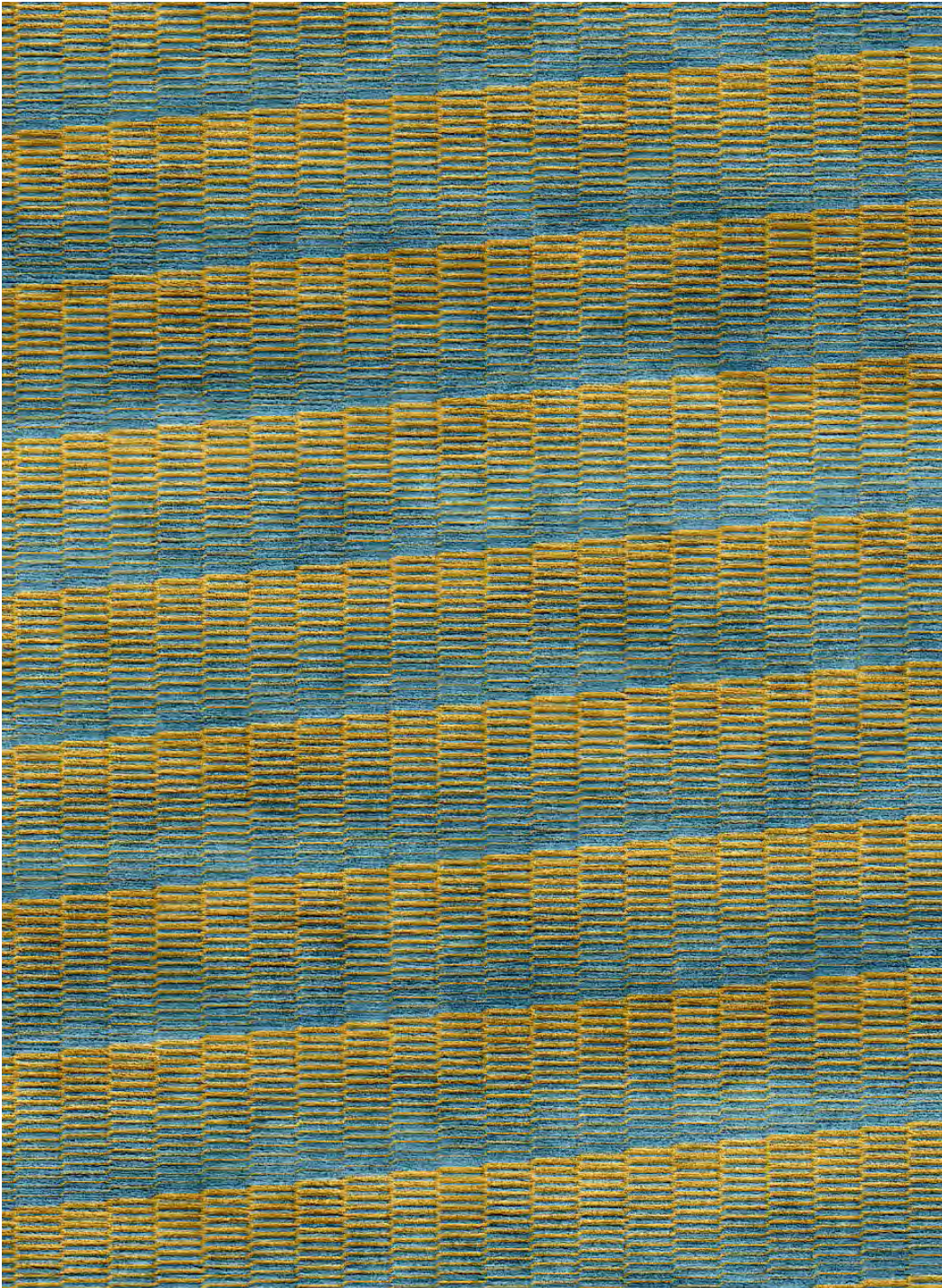
*Linen & Silk*

*Construction*

*Hand-knotted Persian*

*Colorway*

*Prisma*



*Photo of sample rug*

*Full pattern rendering shown as 9x12' rug*

