



SHIIR

CROSSING

Orderly, yet varied. Parallel, yet perpendicular. Like the proverbial fork in the road, Tuareg-inspired Crossing presents an exhilarating choice: to view pattern as vertical – or horizontal. And like all versatile options, it layers even the most current of spaces with design rooted in history – easily traversing centuries, oceans, and contexts.

CROSSING



Origin

Made in India

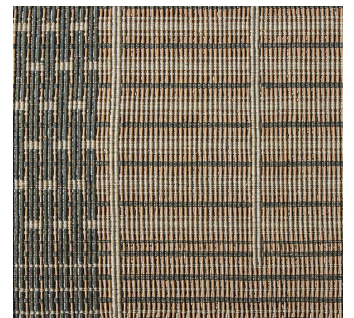
Material

Linen, Leather

Size

Shown as sample size rug

Quarry



Loden



CROSSING



Origin
Made in India

Material
Linen, Leather

Size
Shown as sample size rug

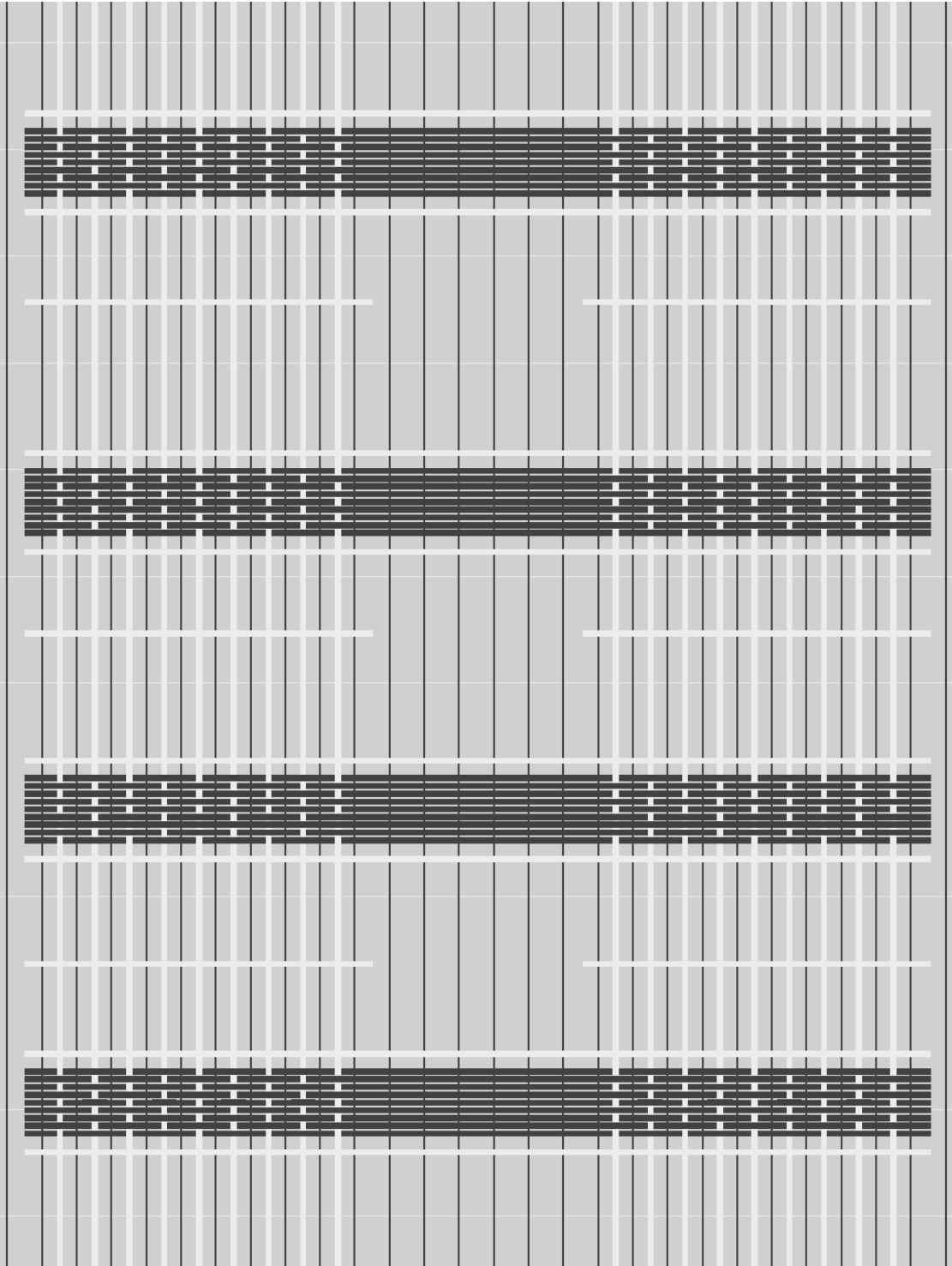
Loden



Quarry



CROSSING



Full pattern rendering shown as 9x12' rug