



SHIIR

## KADA

An intricately detailed, playful balance of medallion-like shields and plentiful geometric figures, Kada's design roots can be traced to a small Persian village famed for producing artistically distinguished rugs. At ease in both traditional and contemporary design schemes, Kada is faithful to history - and forward-thinking in expression.

# KADA



*Origin*  
Made in India

*Material*  
Silk & Wool

*Size*  
Shown as sample size rug

Larin



Tulip



Chutney



# KADA



*Origin*

*Made in India*

*Material*

*Silk & Wool*

*Size*

*Shown as sample size rug*

*Chutney*



*Tulip*



*Larin*



# KADA



*Origin*

Made in India

*Material*

Silk & Wool

*Size*

Shown as sample size rug

Larin

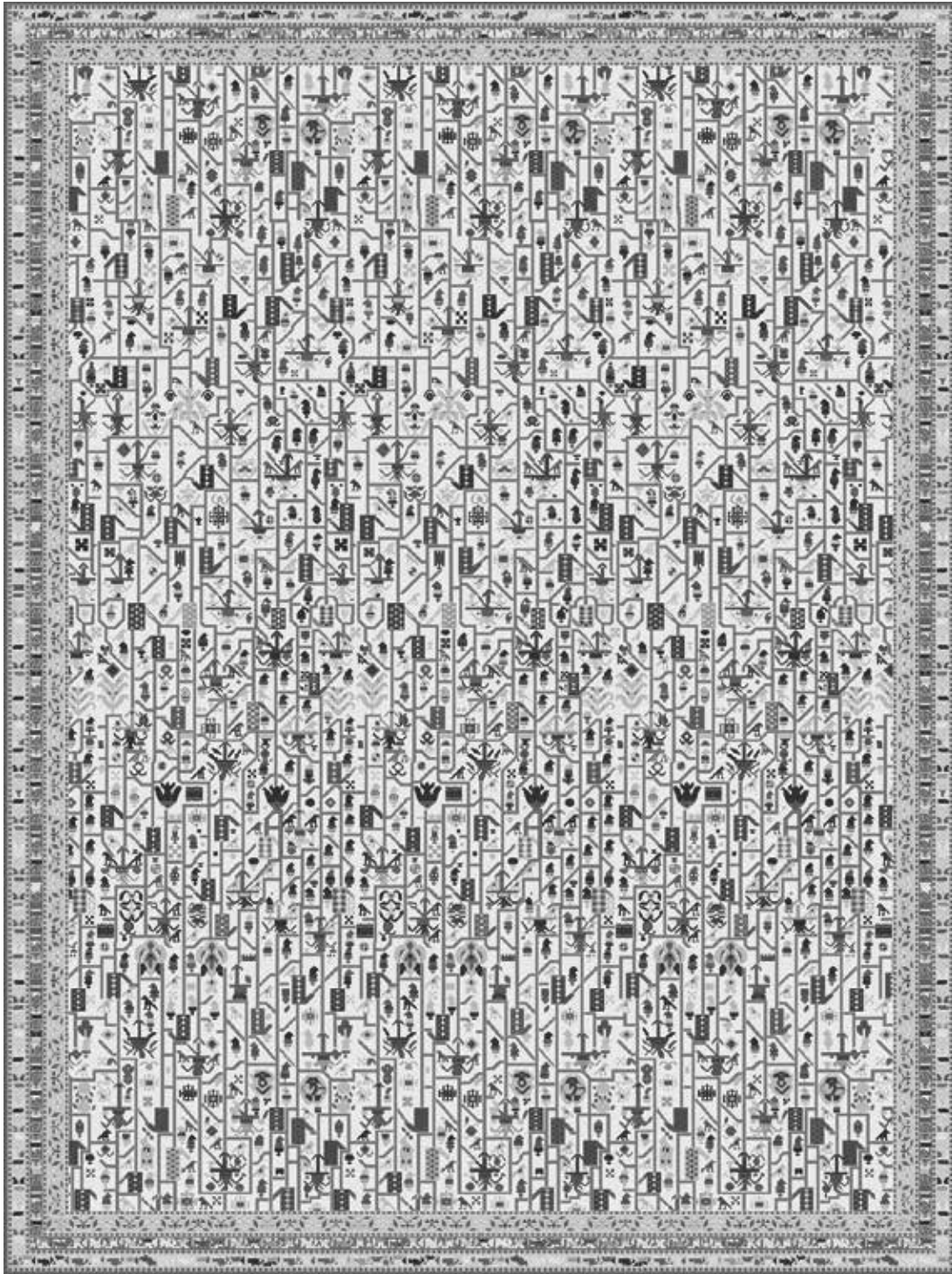


Chutney



Tulip





*Full pattern rendering shown as 9x12' rug*