



SHIIR

## REMY

As it rises and dips - unapologetically, dramatically irregular in the most appealing of ways - Remy's innovative take on traditional flame stitch patterning announces bold attitude. Artistic nuance. And above all, a commitment to reinventing hallmarks of the past.

# REMY



*Origin*  
Made in India

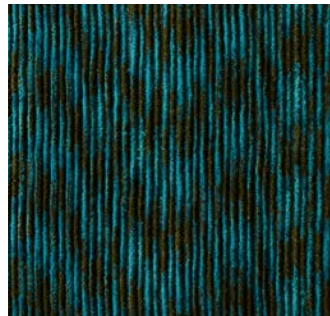
*Material*  
Wool

*Size*  
Shown as sample size rug

*Featherstone*



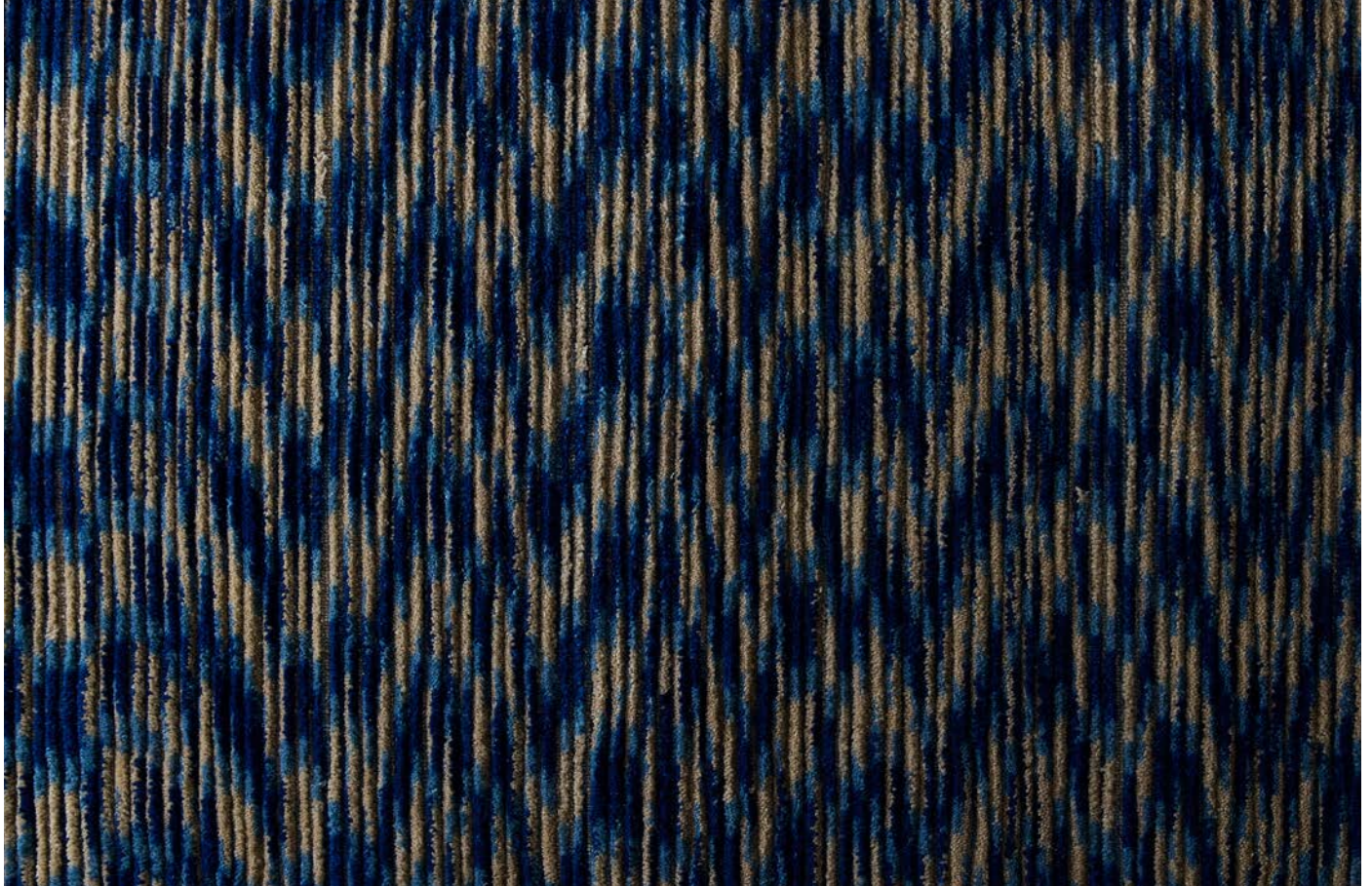
*Larimar*



*Peony*



*Collier*



# REMY

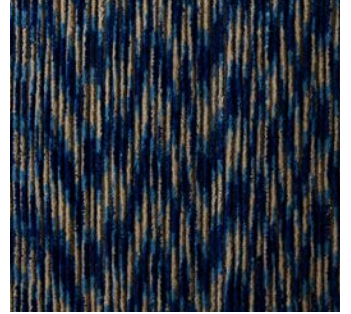


*Origin*  
Made in India

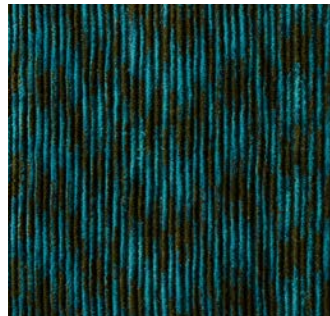
*Material*  
Wool

*Size*  
Shown as sample size rug

*Collier*



*Larimar*



*Peony*



*Featherstone*



# REMY

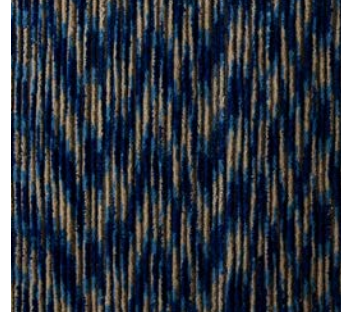


*Origin*  
Made in India

*Material*  
Wool

*Size*  
Shown as sample size rug

*Collier*



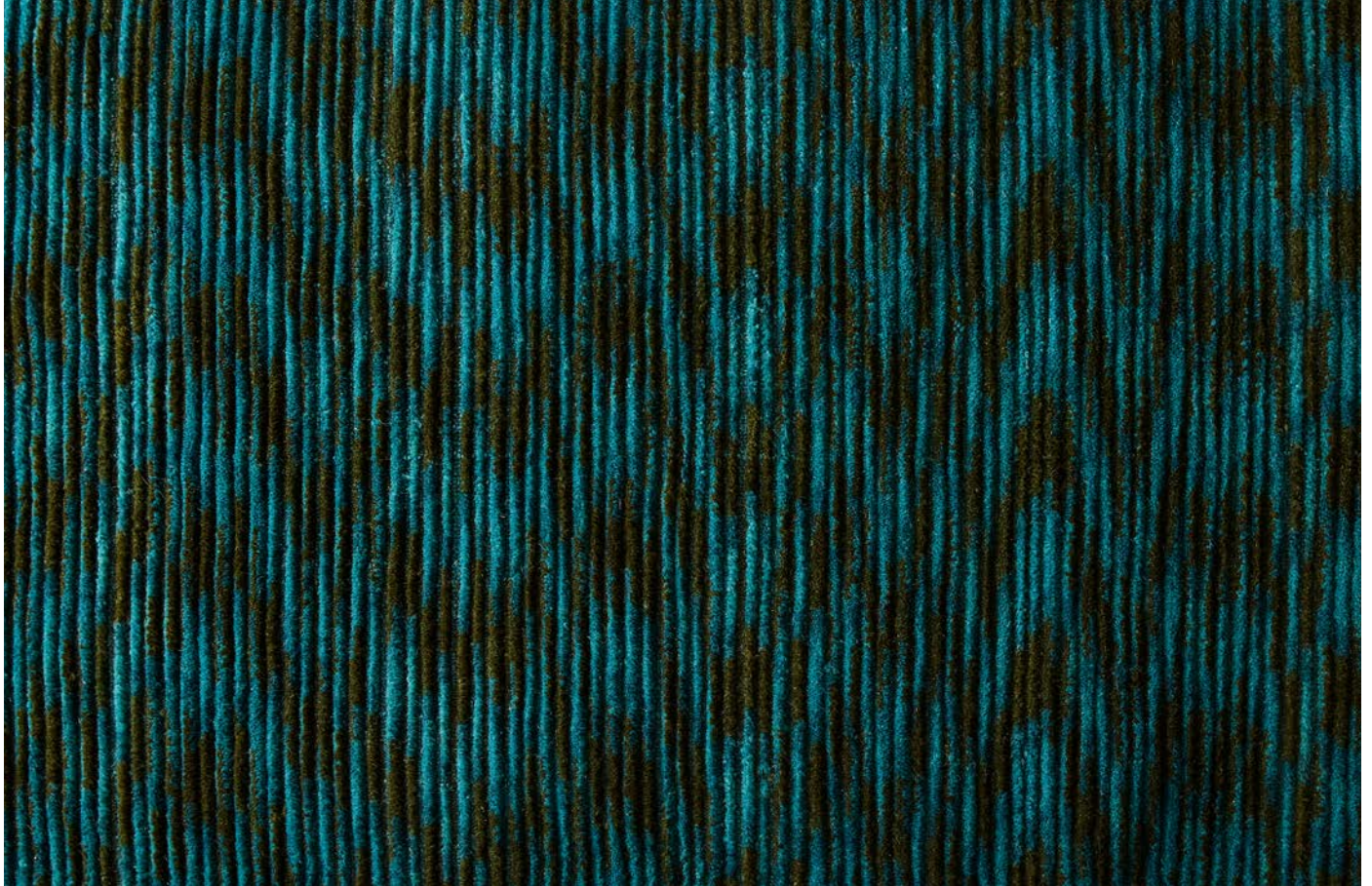
*Featherstone*



*Peony*



*Larimar*



# REMY

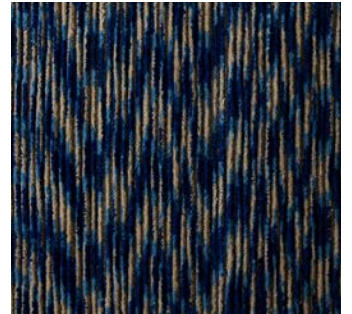


*Origin*  
Made in India

*Material*  
Wool

*Size*  
Shown as sample size rug

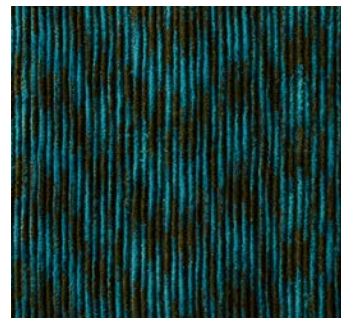
Collier



Featherstone



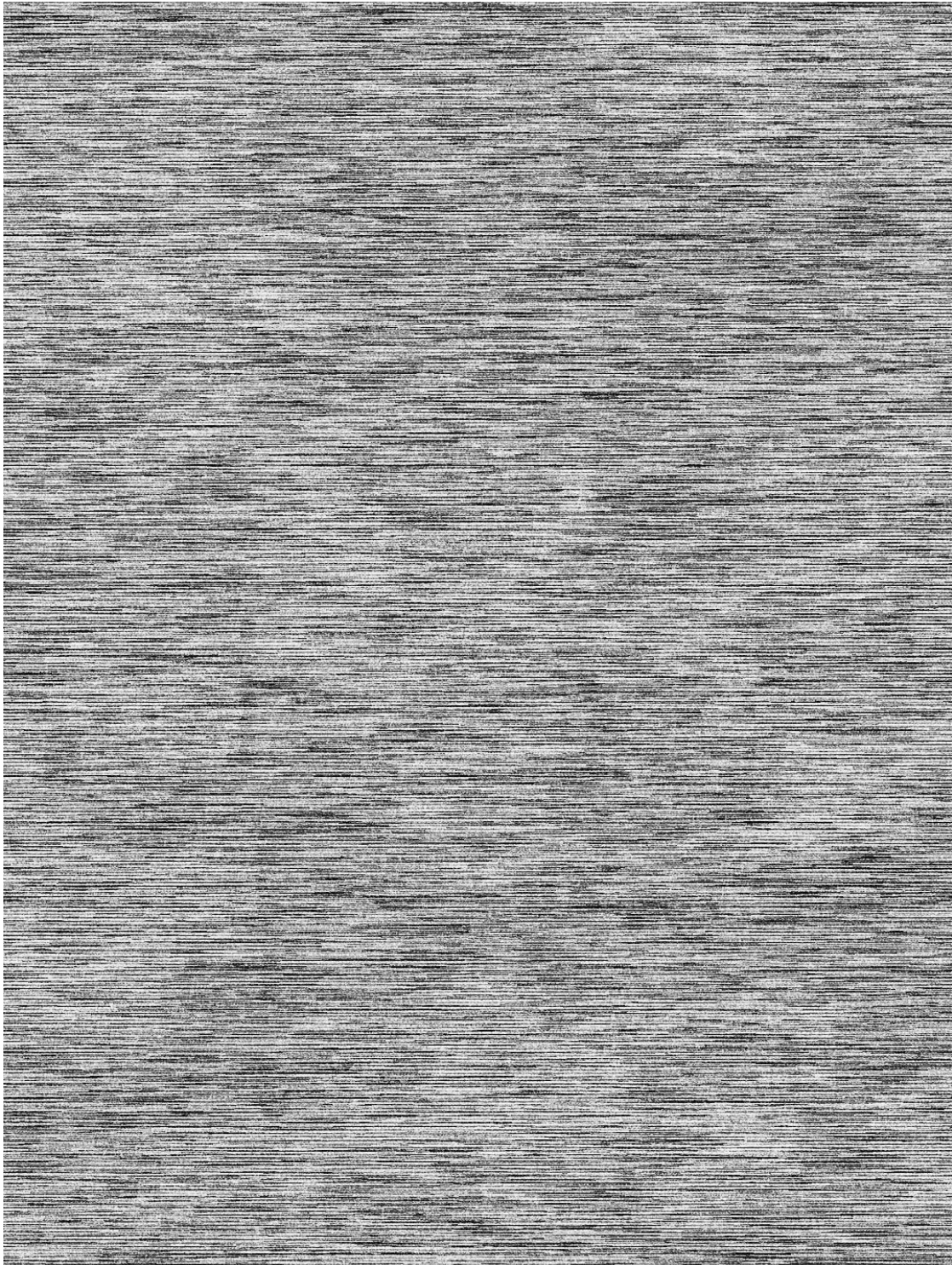
Larimar



Peony



REMY



*Full pattern rendering shown as 9x12' rug*