



SHIIR

## ROVINE

Ancient civilizations recalled. Foundations unearthed. Ruins remaining. And yet - and yet - the clear and unmistakable outline of form, ever-present, reminds, potently, of the import of structure. The complexity of permanence. And the significance of reiteration in its most elemental state.



*Rovine Marmo*



# ROVINE



*Origin*

*Made in India*

*Material*

*Wool & Silk*

*Size*

*Shown as sample size rug*

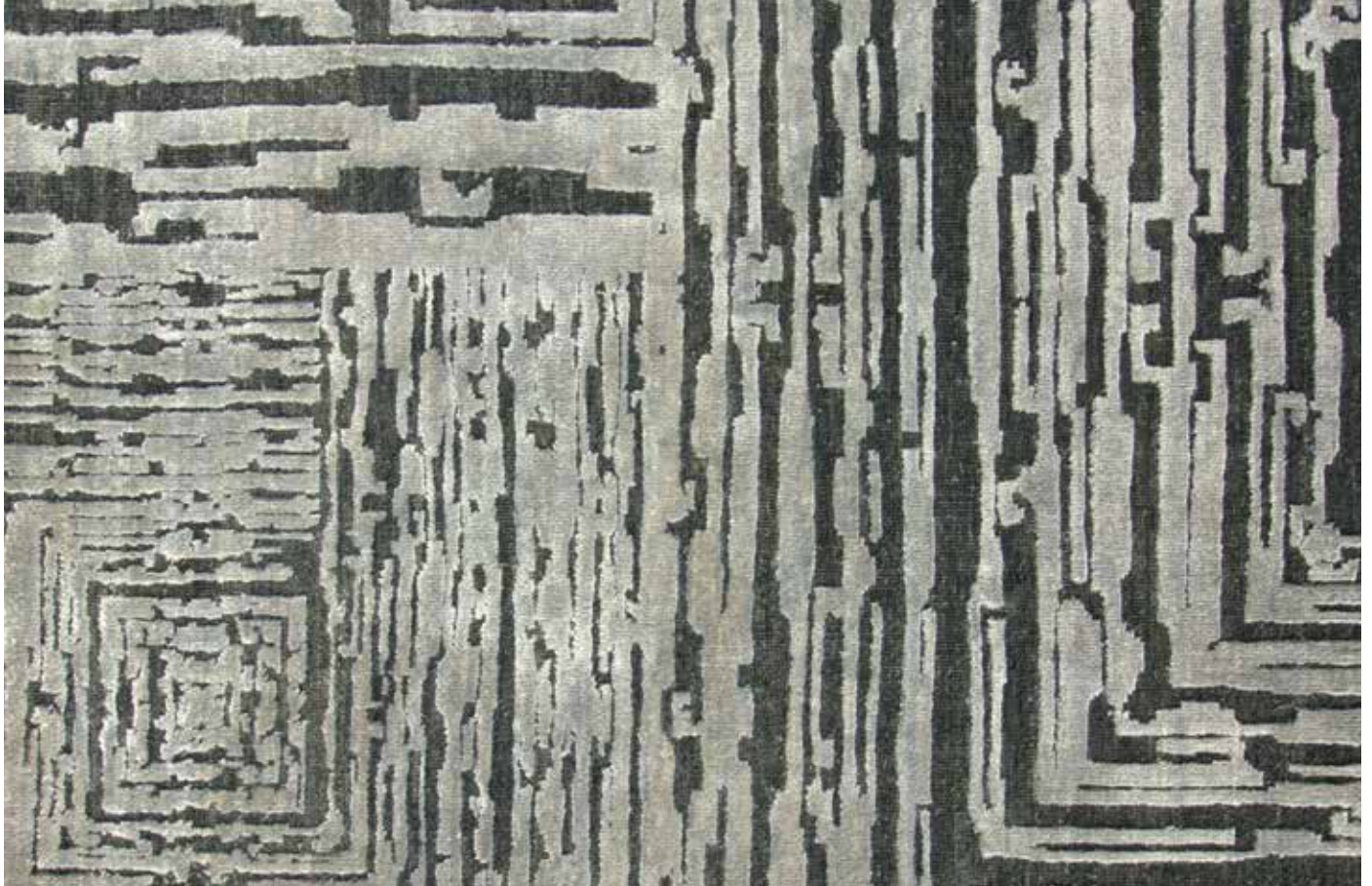
*Marmo*



*Terra*



*Lapis*



# ROVINE



*Origin*

*Made in India*

*Material*

*Wool & Silk*

*Size*

*Shown as sample size rug*

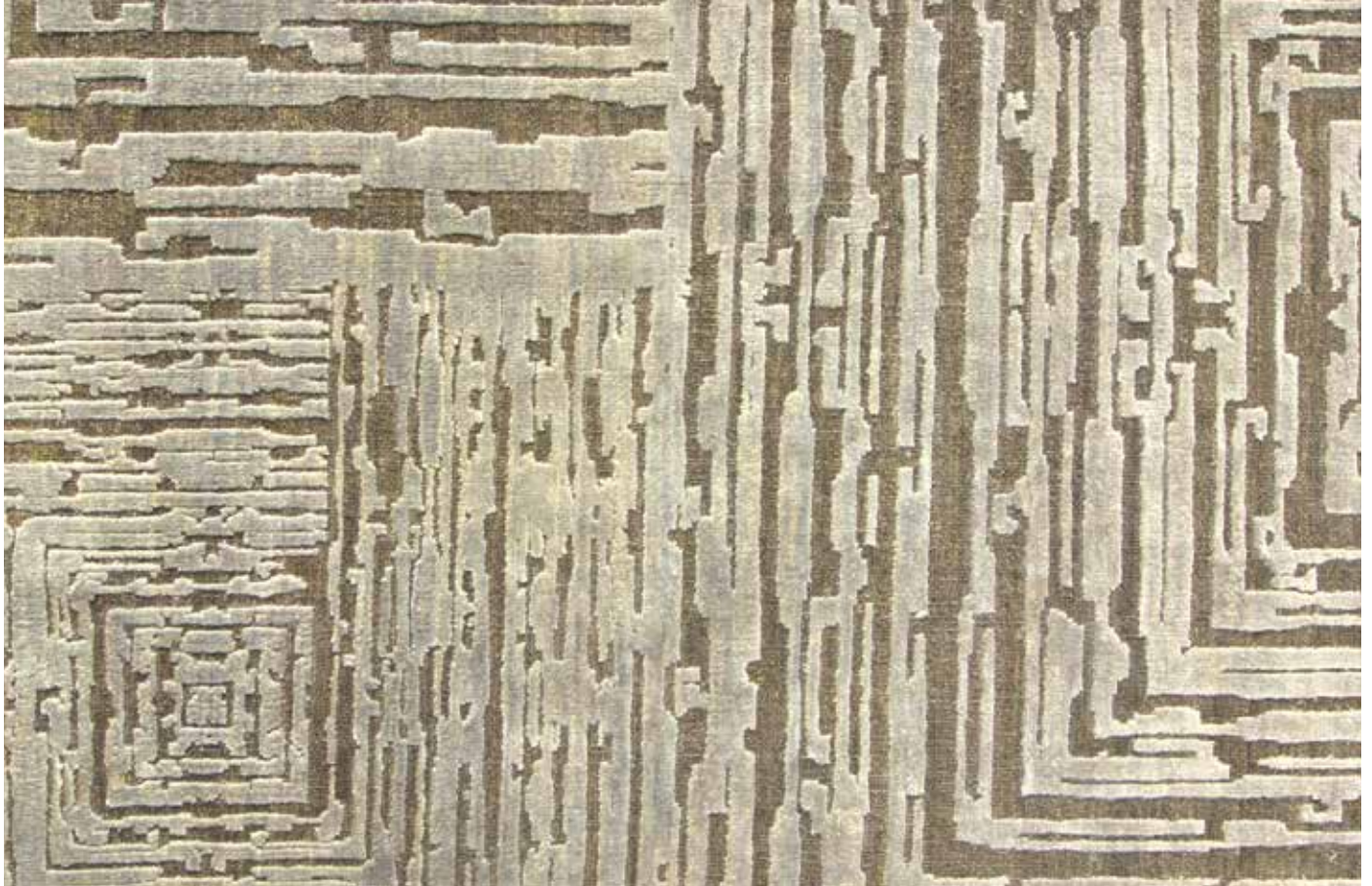
*Lapis*



*Terra*



*Marmo*





# ROVINE



*Origin*

*Made in India*

*Material*

*Wool & Silk*

*Size*

*Shown as sample size rug*

*Lapis*



*Marmo*



*Terra*

