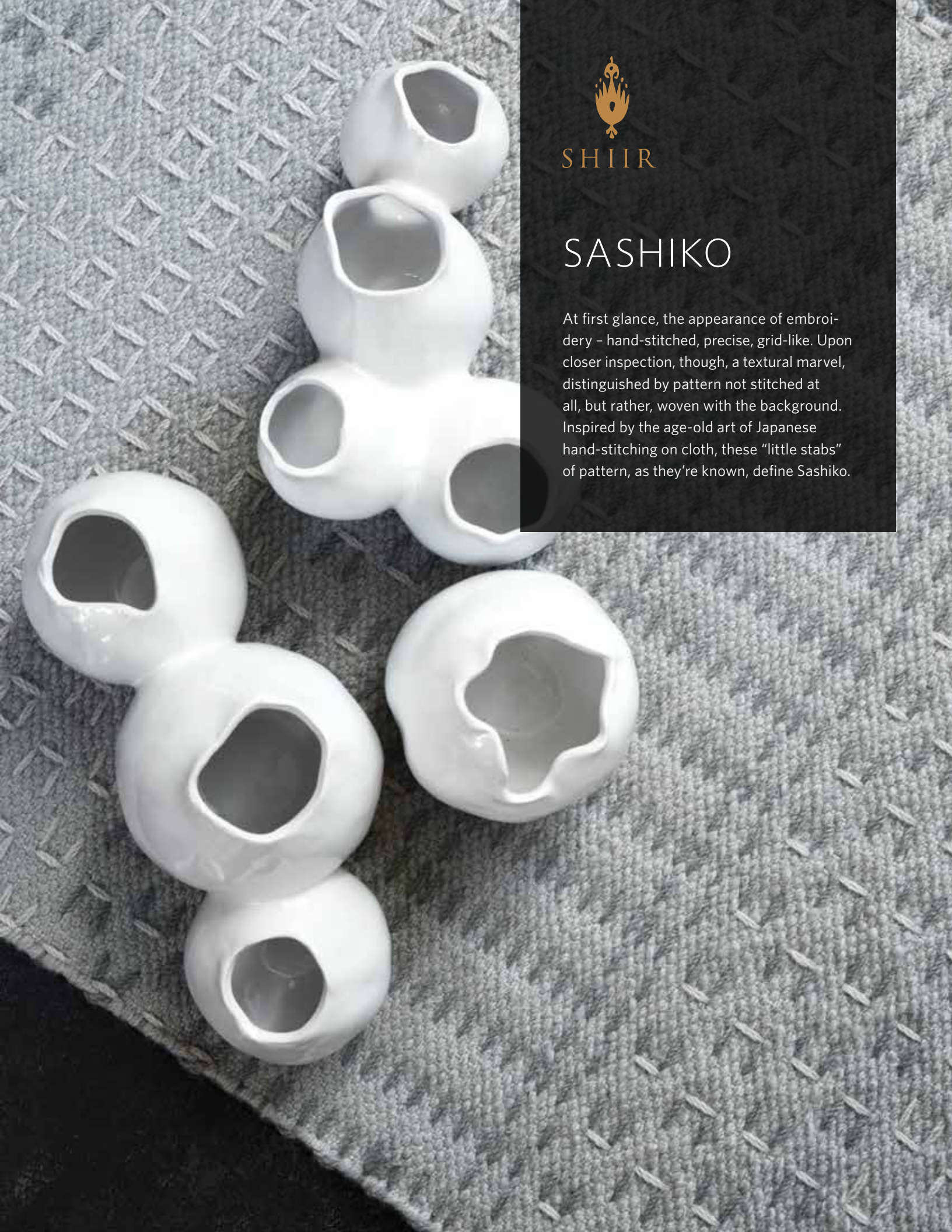




SHIIR

SASHIKO

At first glance, the appearance of embroidery - hand-stitched, precise, grid-like. Upon closer inspection, though, a textural marvel, distinguished by pattern not stitched at all, but rather, woven with the background. Inspired by the age-old art of Japanese hand-stitching on cloth, these "little stabs" of pattern, as they're known, define Sashiko.



SASHIKO

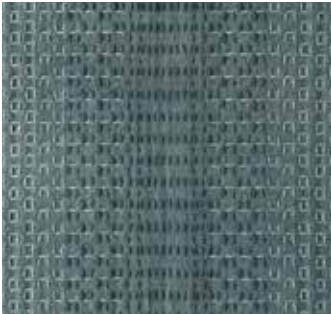


Origin
Made in India

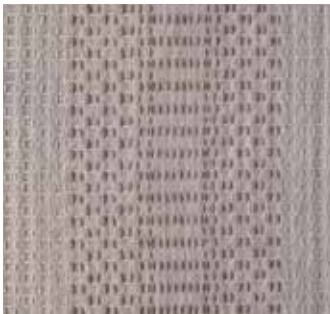
Material
Wool

Size
Shown as sample size rug

Cerulean



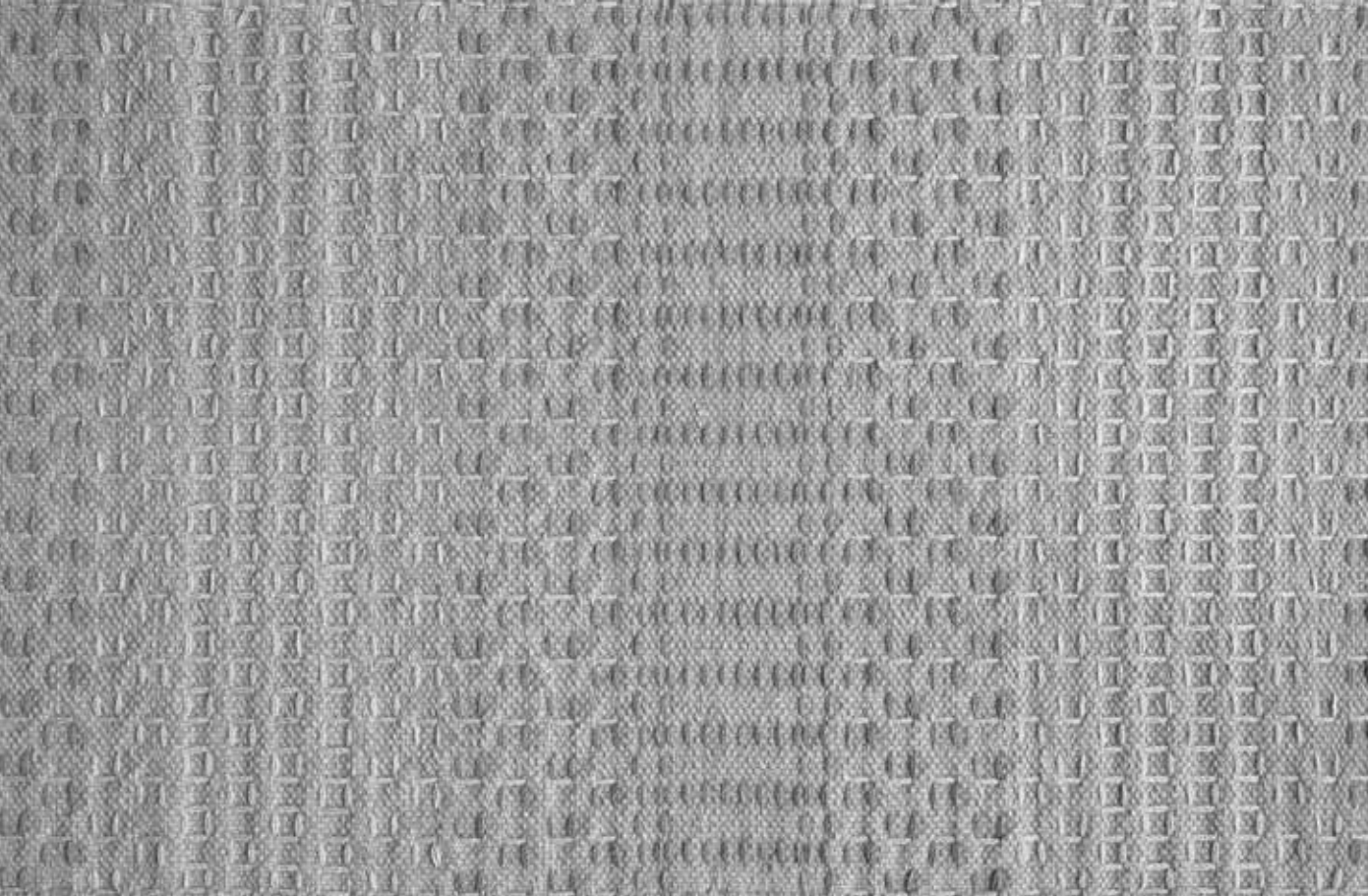
Morado



Simm



Aged Iron



SASHIKO



Origin

Made in India

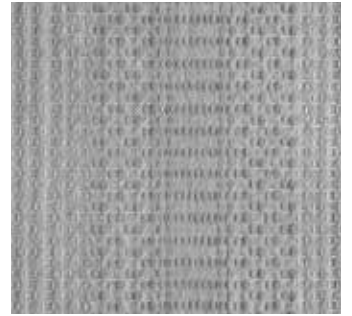
Material

Wool

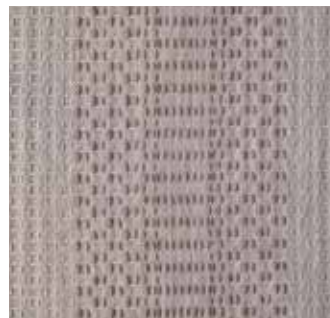
Size

Shown as sample size rug

Aged Iron



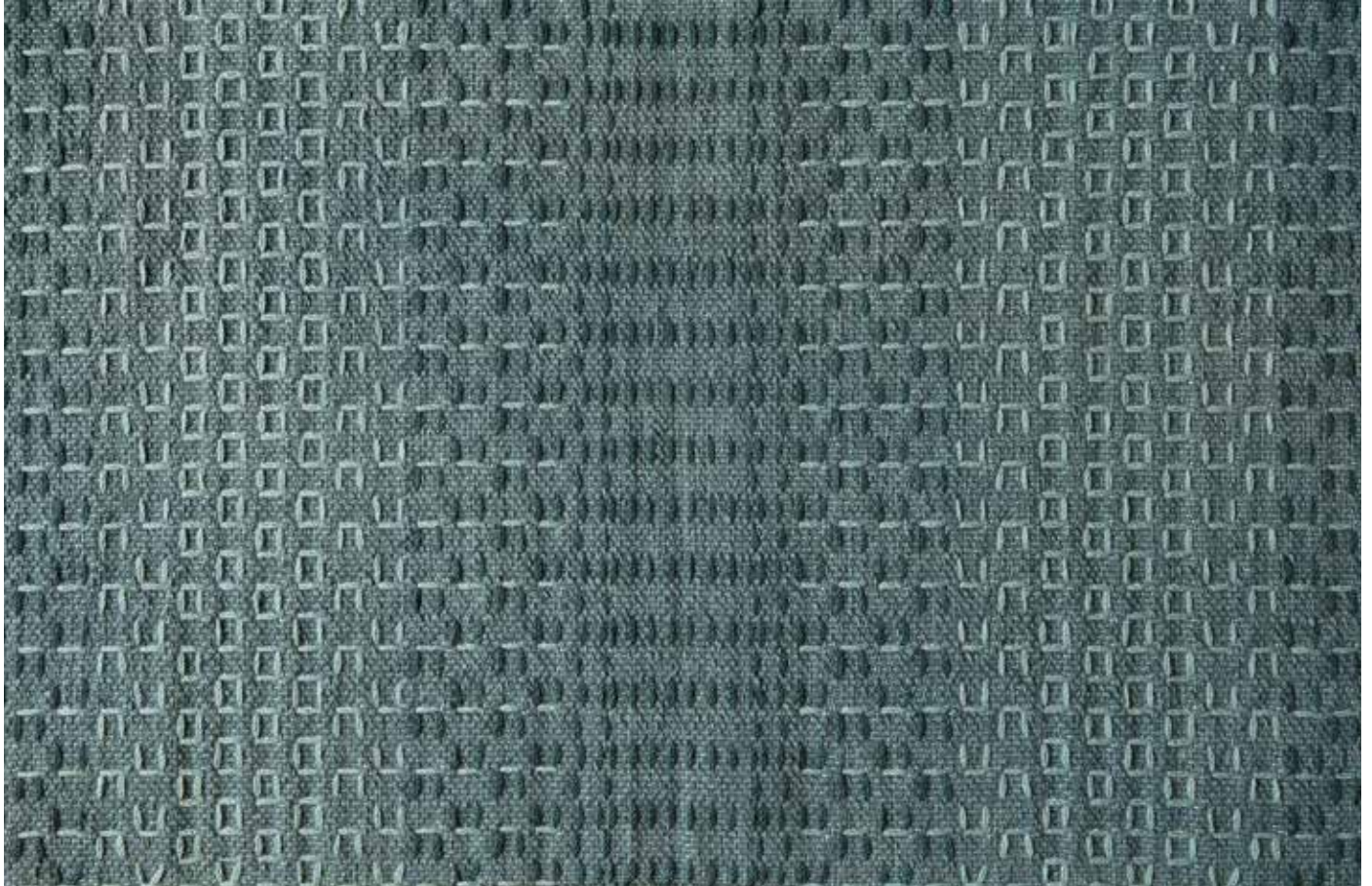
Morado



Simm



Cerulean



SASHIKO



Origin

Made in India

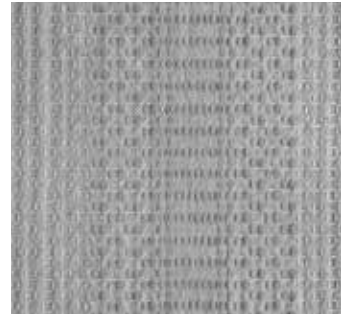
Material

Wool

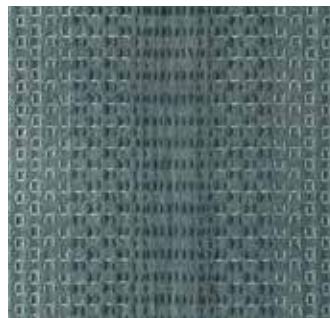
Size

Shown as sample size rug

Aged Iron



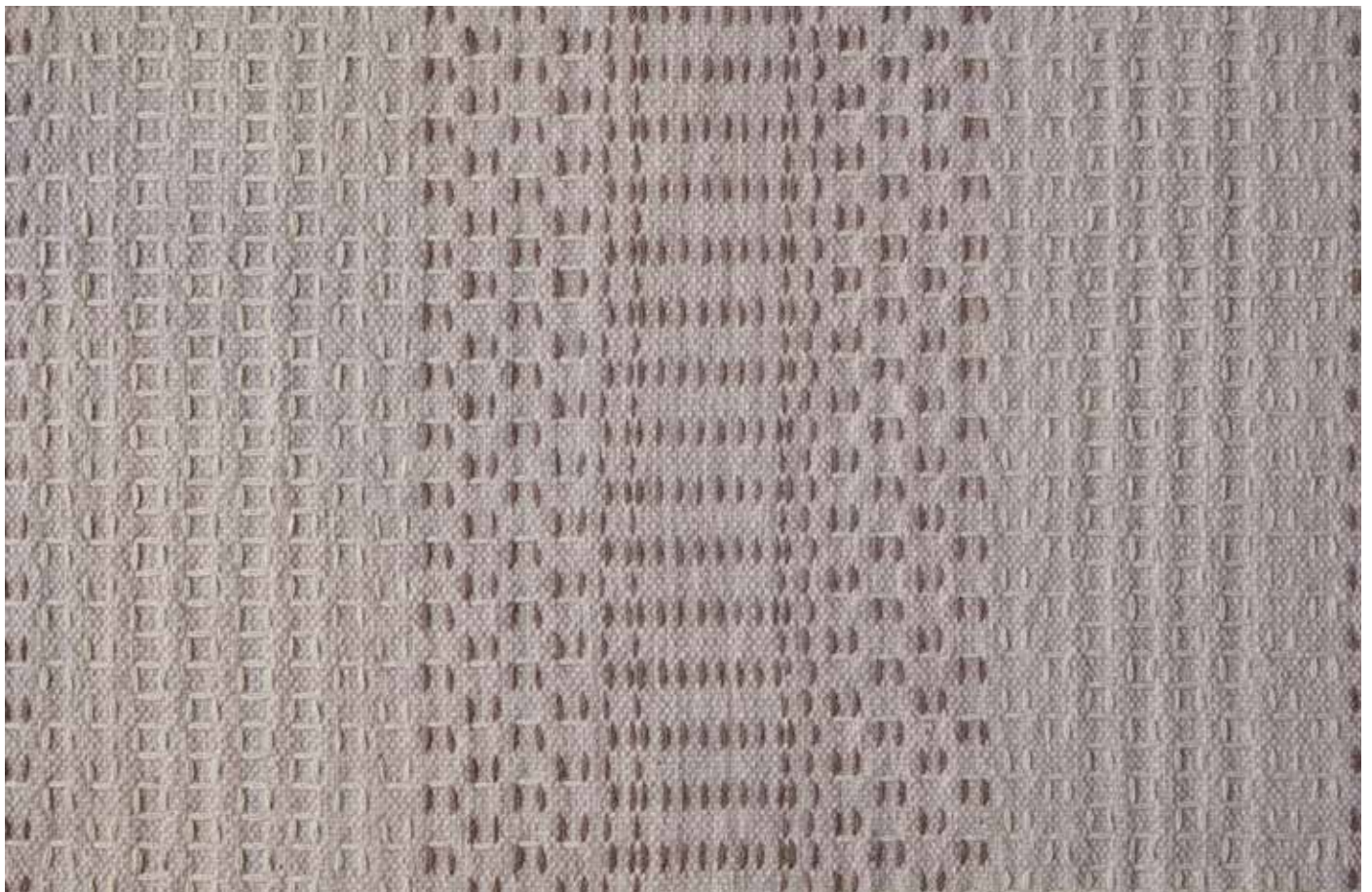
Cerulean



Simm



Morado



SASHIKO



Origin

Made in India

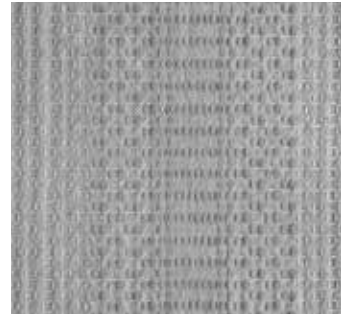
Material

Wool

Size

Shown as sample size rug

Aged Iron



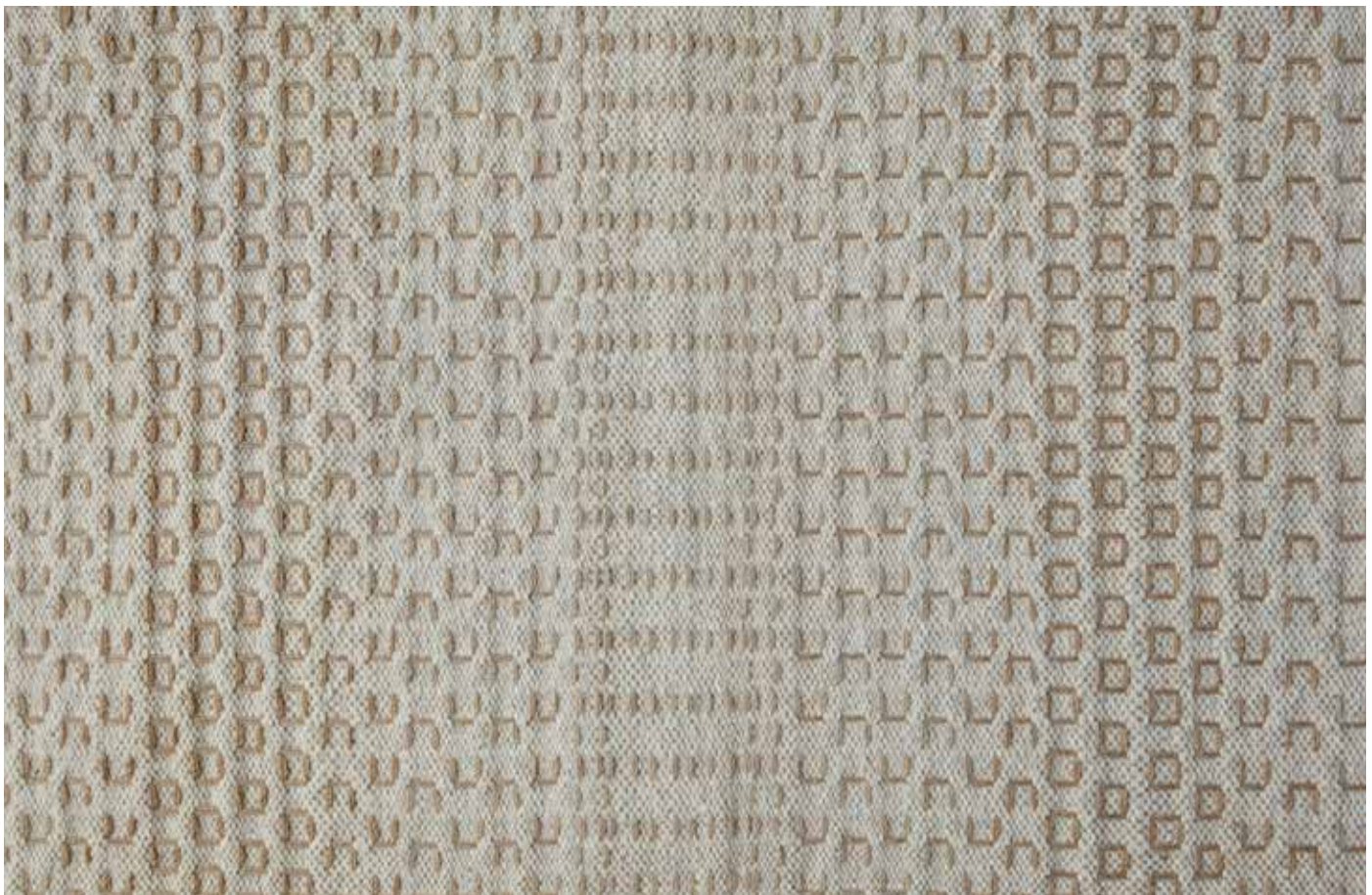
Cerulean



Morado



Simm



SASHIKO



Full pattern rendering shown as 9x12' rug