



SHIIR

## SEDIRA

Layered and ridged, like sediments bonded over time immemorial. History, revealed. Shape, considered. Hue, twinned. Connected in pattern and open to possibilities.



# SEDIRA

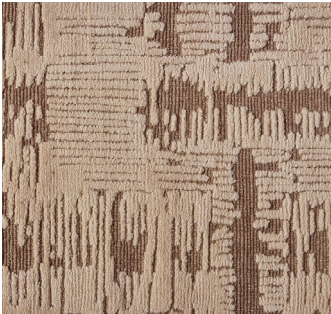


*Origin*  
Made in India

*Material*  
Wool

*Size*  
Shown as sample size rug

Forde



Greylin



Roselle



Cyanis





# SEDIRA



*Origin*  
Made in India

*Material*  
Wool

*Size*  
Shown as sample size rug

Cyanis



Greylin



Roselle



Forde





# SEDIRA



*Origin*  
Made in India

*Material*  
Wool

*Size*  
Shown as sample size rug

Cyanis



Forde



Roselle



Greylin





# SEDIRA



*Origin*  
Made in India

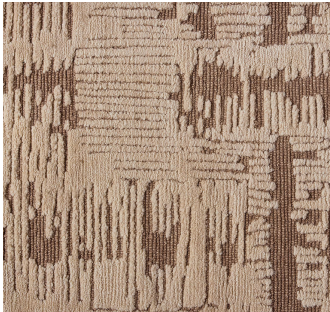
*Material*  
Wool

*Size*  
Shown as sample size rug

Cyanis



Forde



Greylin

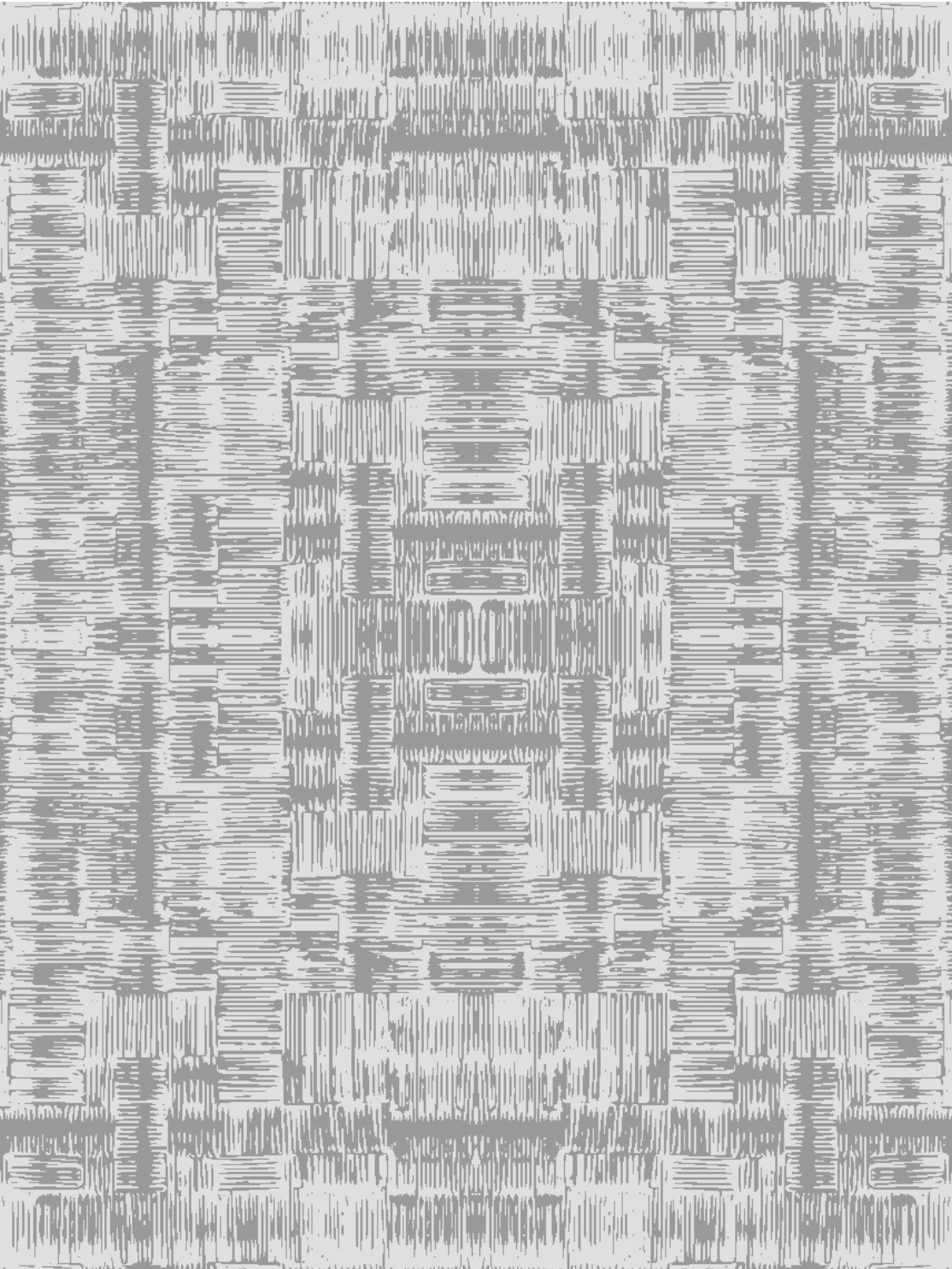


Roselle





SEDIRA



*Full pattern rendering shown as 9x12' rug*