



SHIIR

## SEN

Intricate in design yet fuss-free in approach, Sen personifies juxtaposition. Consider its crisply elongated vertical orientation – and the geometry of its alternating horizontal stripes. Or its ages-old Persian pedigree – and its simultaneous suitability to contemporary interiors. The result? An interplay of aesthetic energy and movement.

# SEN



*Origin*  
Made in India

*Material*  
Wool

*Size*  
Shown as full size rug

Cham



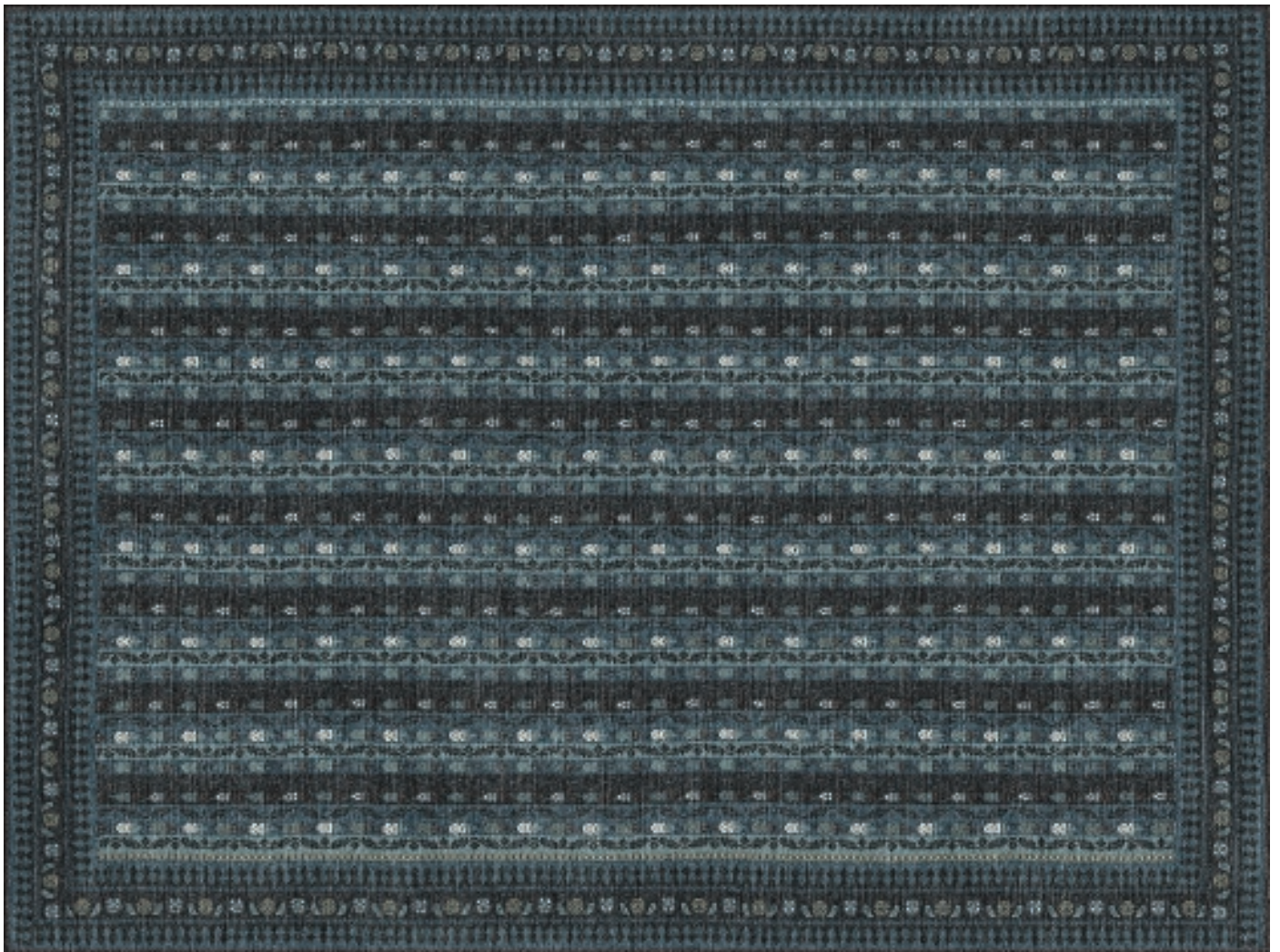
Clay



Reese



Benami



# SEN

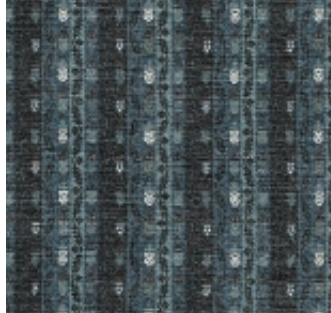


*Origin*  
Made in India

*Material*  
Wool

*Size*  
Shown as full size rug

Benami



Clay



Reese



Cham



# SEN

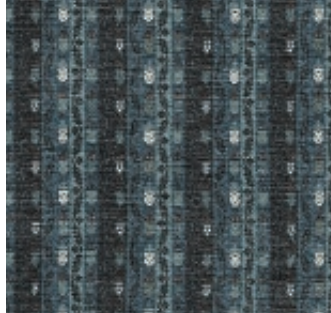


*Origin*  
Made in India

*Material*  
Wool

*Size*  
Shown as sample size rug

Benami



Cham



Reese



*Clay*



# SEN

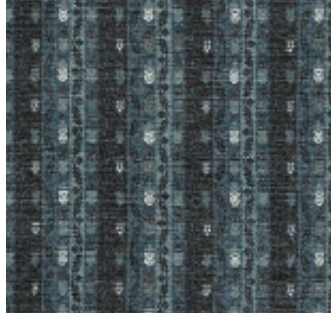


*Origin*  
Made in India

*Material*  
Wool

*Size*  
Shown as full size rug

Benami



Cham

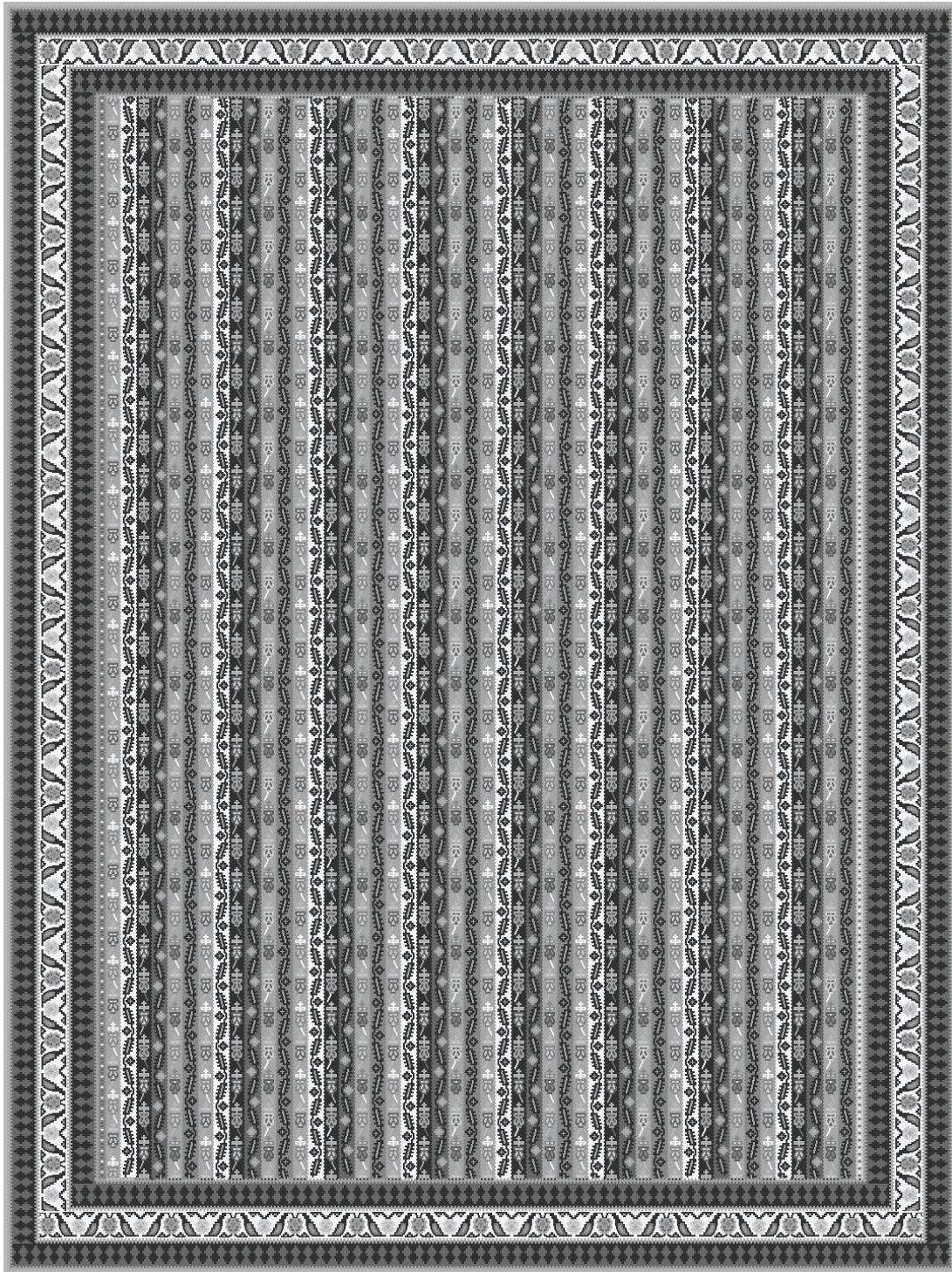


Clay



Reese





*Full pattern rendering shown as 9x12' rug*