



SHIIR

## SHIBORI

Suggestive of - indeed, informed by - 8th century Japanese fabric dyeing techniques, Shibori summons memories of ages-old manipulations, and marriages, between fiber and dye. Oxidized to evoke eternities; rendered wholly new by imagination.

*Shibori Rokocha*

# SHIBORI



*Origin*

*Made in India*

*Material*

*Wool & Silk*

*Size*

*Shown as sample size rug*

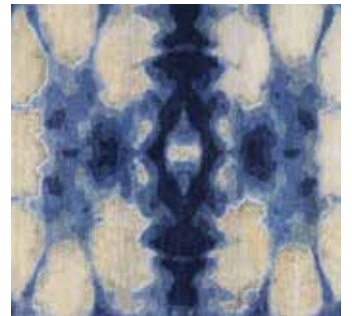
*Konsho*



*Midori*



*Rokocha*



*Arashi*



# SHIBORI



*Origin*  
Made in India

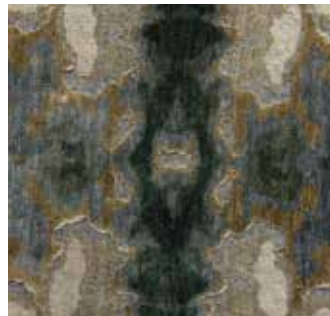
*Material*  
Wool & Silk

*Size*  
Shown as sample size rug

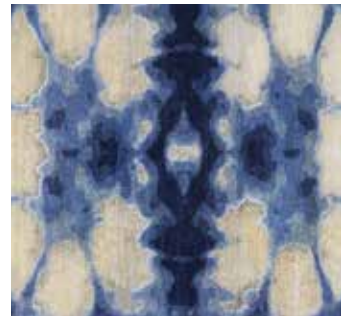
*Arashi*



*Midori*



*Rokocha*



*Konsho*



# SHIBORI



*Origin*

*Made in India*

*Material*

*Wool & Silk*

*Size*

*Shown as sample size rug*

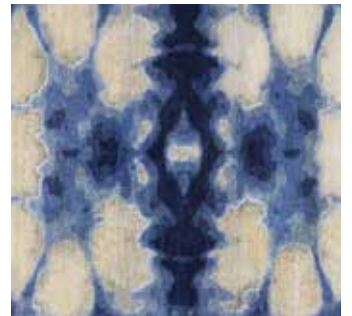
*Arashi*



*Konsho*



*Rokocha*



*Midori*



# SHIBORI



*Origin*  
Made in India

*Material*  
Wool & Silk

*Size*  
Shown as 9x12' rug

*Arashi*



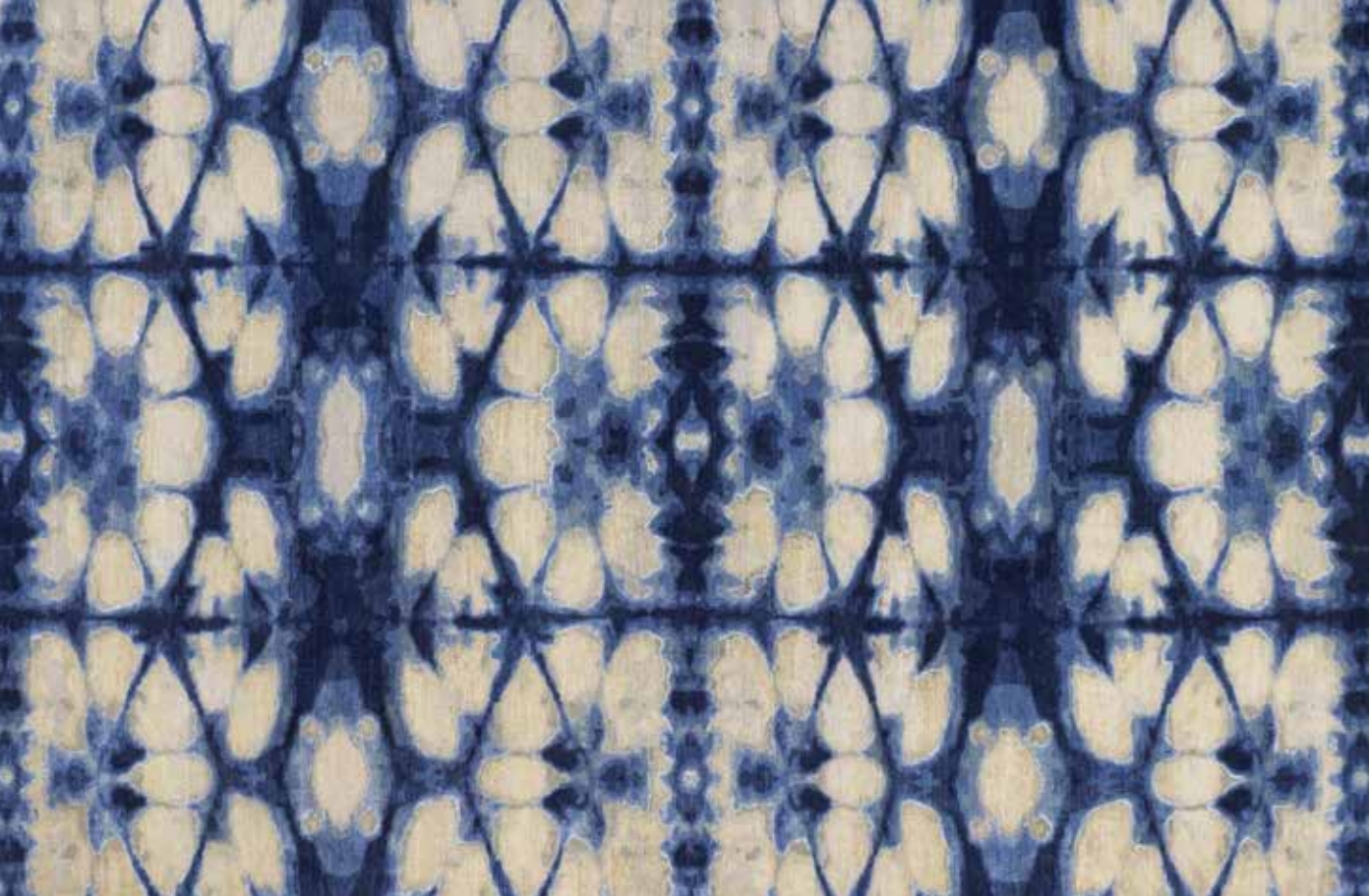
*Konsho*



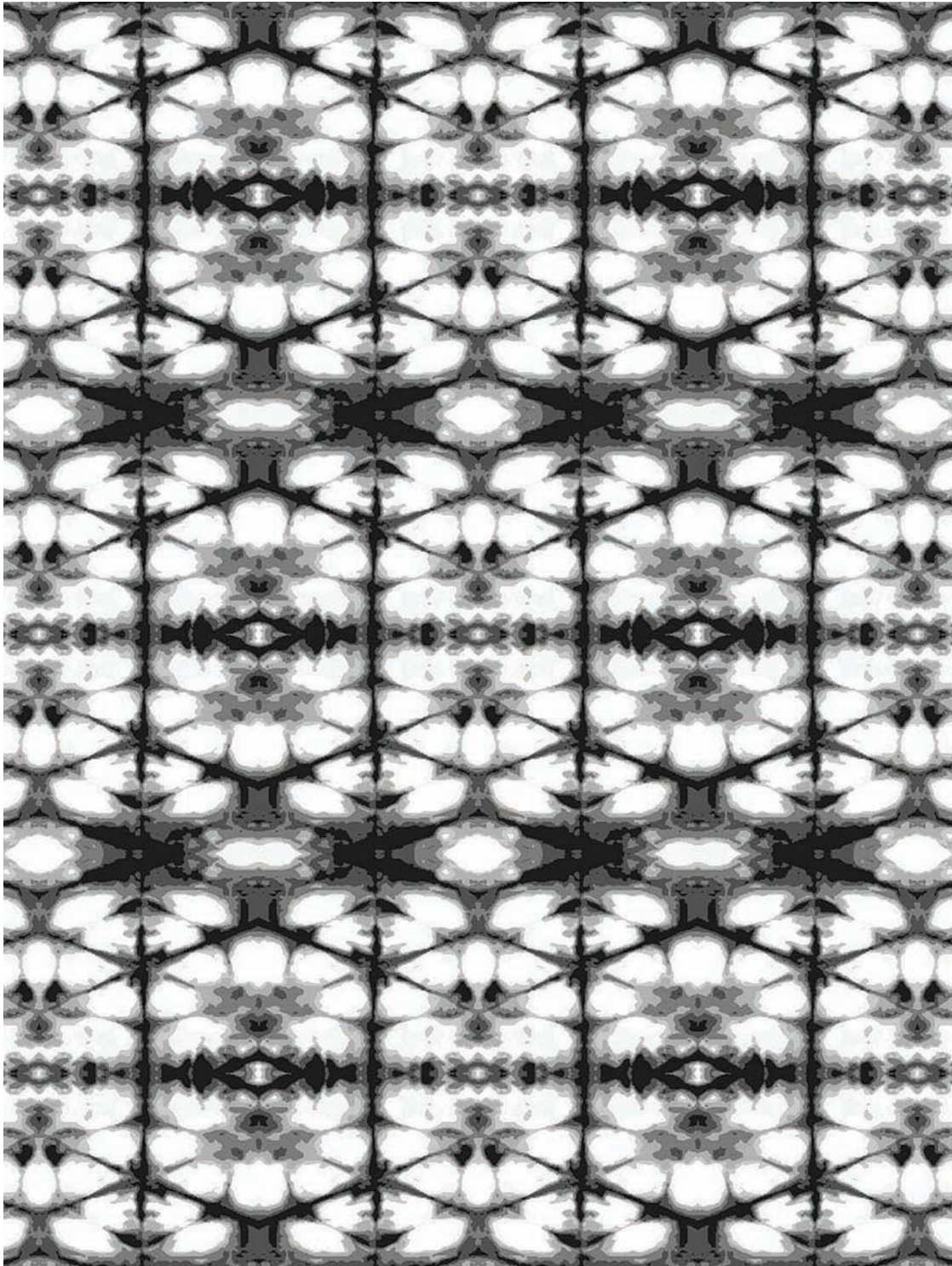
*Midori*



*Rokocha*



SHIBORI



*Full pattern rendering shown as 9x12' rug*