



SHIIR

## WALKER

A mélange of wool and silk and dual colors – one for pile and one for loop – are meticulously hand-carved to birth lights and darks that are so much more than the sum of their twin hues. Add to the mix a trio of sheared pile heights, ribbed loops, and consistency of repeat for unparalleled distinction that's at once subtle and rich.



# WALKER



*Origin*

*Made in Nepal*

*Material*

*Wool & Silk*

*Size*

*Shown as sample size rug*

*Gregg*



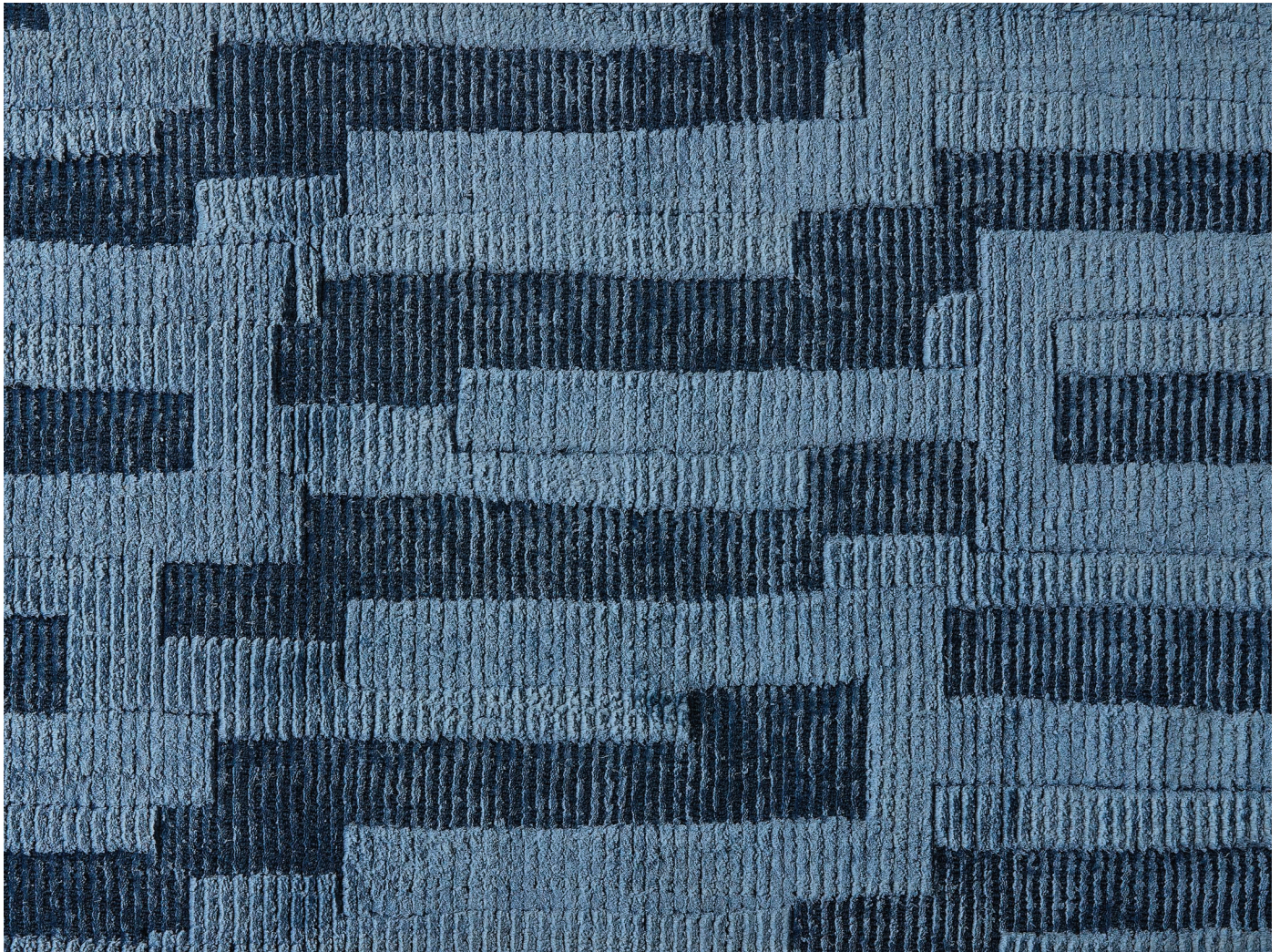
*Moss*



*Shoji*



*Danube*





# WALKER



*Origin*

Made in Nepal

*Material*

Wool & Silk

*Size*

Shown as sample size rug

Danube



Moss



Shoji



*Gregg*





# WALKER



*Origin*

*Made in Nepal*

*Material*

*Wool & Silk*

*Size*

*Shown as sample size rug*

*Danube*



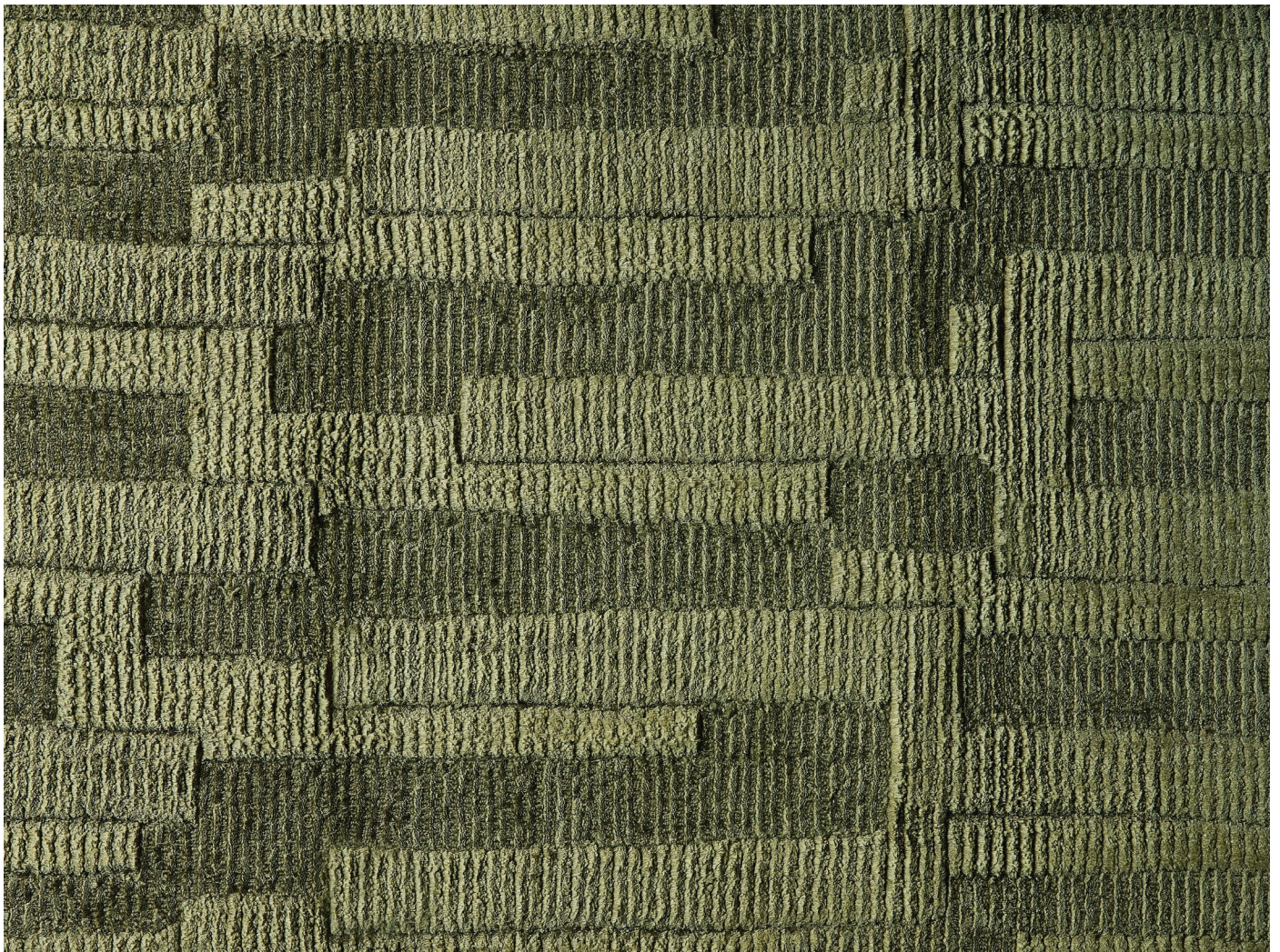
*Gregg*



*Shoji*



*Moss*





# WALKER



*Origin*

*Made in Nepal*

*Material*

*Wool & Silk*

*Size*

*Shown as sample size rug*

*Danube*



*Gregg*



*Moss*

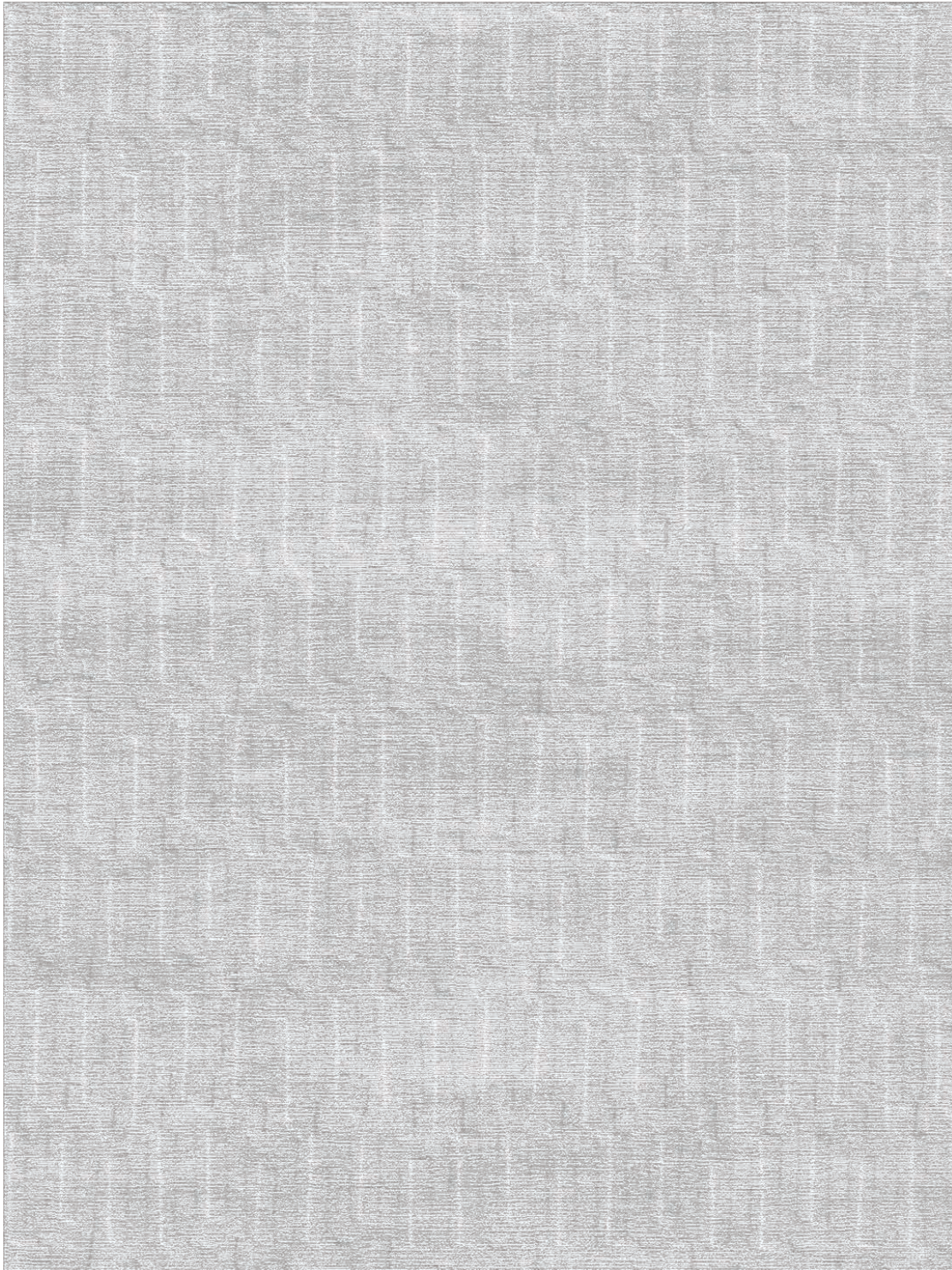


*Shoji*





WALKER



*Full pattern rendering shown as 9x12' rug*